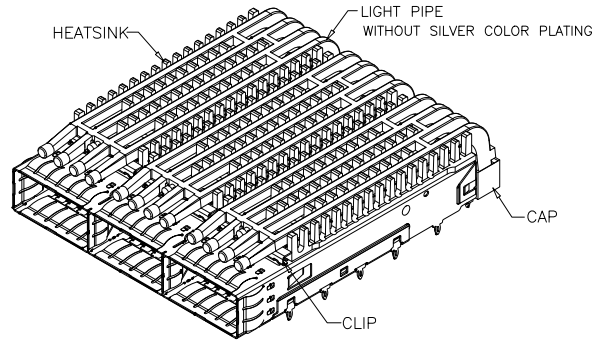
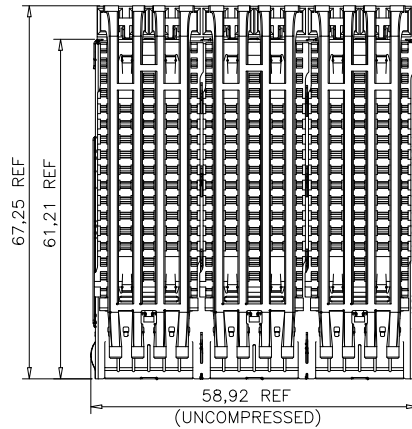


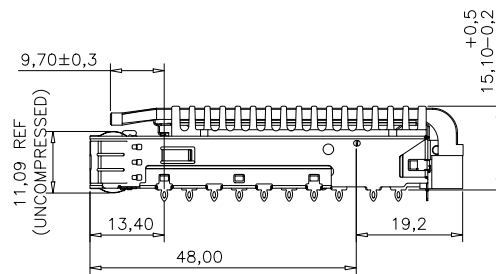
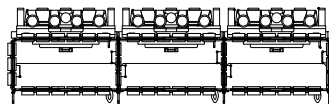


7		8	
REV:	ECN. NO.	NAME	DATE

### BASE CAGE DETAILS

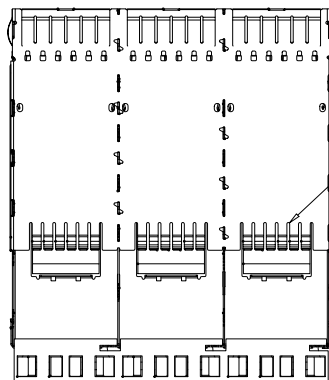


- MATERIALS:  
 CAGE UP: STAINLESS STEEL, 0.25 THICKNESS  
 CAGE DOWN: STAINLESS STEEL, 0.25 THICKNESS  
 PARTITION: STAINLESS STEEL  
 EMI FINGERS: STAINLESS STEEL  
 HEATSINK: ALUMINUM  
 HEATSINK CLIP: STAINLESS STEEL  
 LIGHT PIPE MATERIAL: CLEAR POLYCARBONATE  
 CAP: HIGH TEMPERATURE THERMOPLASTIC 94V-0, BLACK
- SURFACE FINISH:  
 BODY CAGE: CLEANING  
 EMI SPRING FINISH: CLEANING AND HOLE SEALING  
 HEATSINK FINISH: BLACK ANODIZED  
 HEATSINK CLIP FINISH: CLEANING
- MATE WITH QSFP MSA COMPATIBLE TRANSCEIVER.
- INSIDE SURFACE OF CASKET WHEN FULLY COMPRESSED.
- REFERENCE DOCUMENTS:  
 PRODUCT SPECIFICATION: SFF-8663
- THIS PRODUCT COMPLY TO ROHS DIRECTIVE 2011/65/EU.

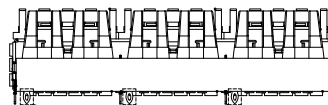


S5013 1 2 2 2 0 S A4

- REAR LEGS:
  - 0=W/O REAR LEG
  - 1=W/ 1 REAR LEG
- LIGHT PIPE & CAP OPTION:
  - 0=W/O Light Pipe, W/O CAP
  - 1=W/ Light Pipe, W/O CAP
  - 2=W/ Light Pipe, W/ CAP
- LIGHT PIPE DIM "A" & PLATING OPTION:
  - 0=W/O Light Pipe
  - 1=DIM A=10.7mm, W/O Silver Color plating
  - 2=DIM "A"=9.7mm, W/O Silver Color plating
  - 3=DIM A=10.7mm, W/Silver Color plating
  - 4=DIM "A"=9.7mm, W/Silver Color plating
- PROCESS OPTION:
  - 0=W/O Heatsink, Open Top
  - 1=W/PCI(Heatsink 4.2mm)
  - 2=W/SAN(Heatsink 6.5mm)
  - 3=W/Networking(Heatsink 13.5mm)



UNDER BELLY EMI FINGERS



REAR LEGS ARE OPTIONAL  
( SEE PAGE 1 )

GENERAL TOLERANCE  
 .X±0.30 .X±1°  
 .XX±0.20 .XX±5°  
 .XXX±0.10



FOR YOUR  
VITAL CONNECTION

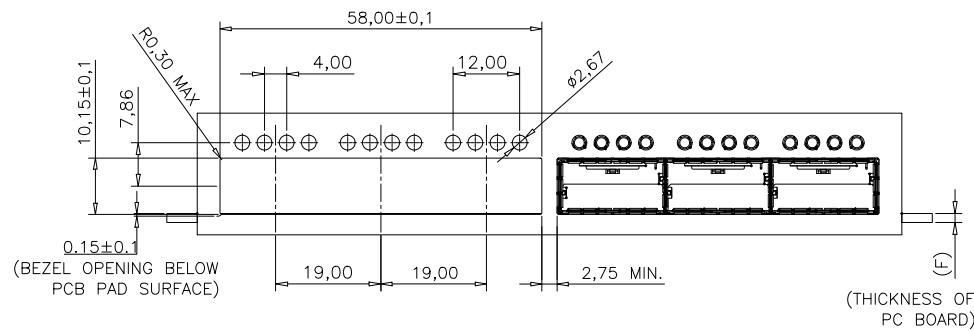
TITLE: QSFP+28G 1X3 CAGE

DRAWN BY:	Zou Long	PART NO:	S501312220SA4	REV: A
CHECKED BY:	Bob	SIZE: A4	UNIT:mm	SHEET:1 OF 5 FCN: A4
APPROVED BY:	QPF	PROJECTION		http://www.vitalconn.com

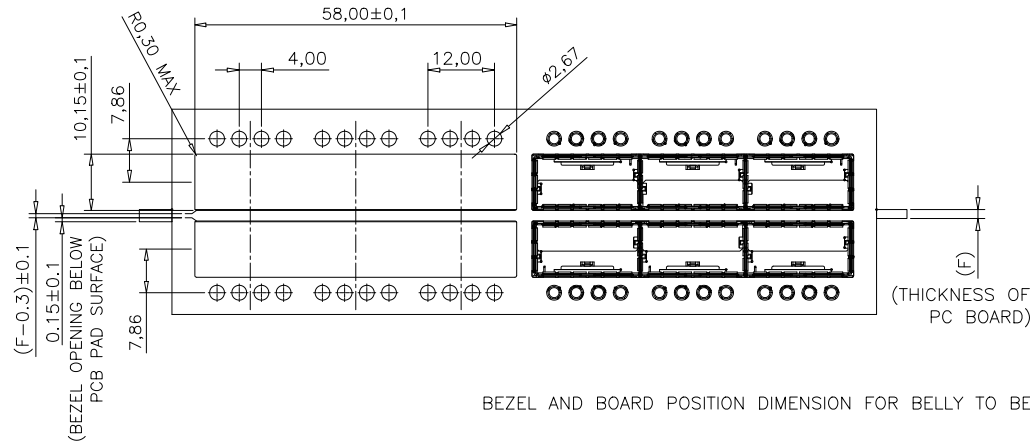
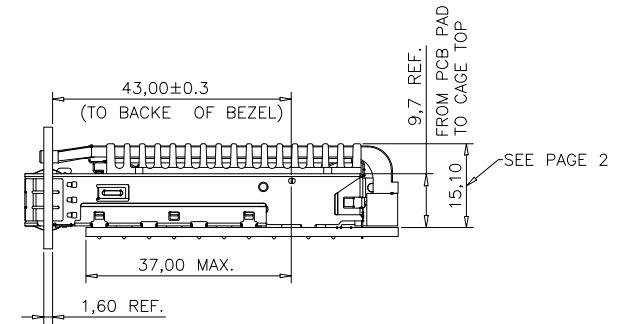
For technical support, please send an email to support@vitalconn.com



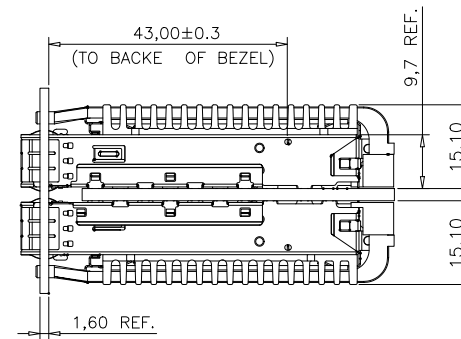
7		8	
REV:	ECN. NO.	NAME	DATE



BEZEL AND BOARD POSITION DIMENSION FOR SINGLE SIDE MOUNTING



BEZEL AND BOARD POSITION DIMENSION FOR BELLY TO BELLY MOUNTING



NOTES:

1. THE NORMAL THICKNESS OF CUSTOMER SUPPLIED PC BOARD.(DIM. "F")  
SINGLE SIDED PC BOARD THICKNESS: 1.60mm MIN.  
BELLY TO BELLY PC BOARD MIN. THICKNESS: 3.0mm MIN.
2. GENERAL TOLERANCE: ±0.05.

GENERAL TOLERANCE  
 .X±0.30 .X±1°  
 .XX±0.20 .XX±5°  
 .XXX±0.10



FOR YOUR  
VITAL CONNECTION

TITLE: QSFP+28G 1X3 CAGE

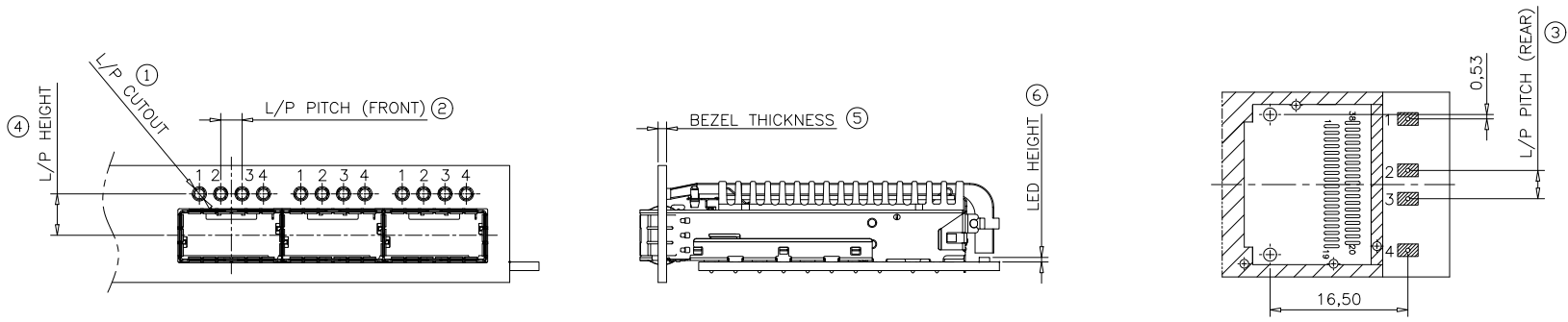
DRAWN BY:	Zou Long	PART NO:	S501312220SA4	REV: A
CHECKED BY:	Bob	SIZE: A4	UNIT:mm	SHEET:2 OF 5
APPROVED BY:	QPF	PROJECTION		FCN: A4
<a href="mailto:support@vitalconn.com">http://www.vitalconn.com</a>				

For technical support, please send an email to [support@vitalconn.com](mailto:support@vitalconn.com)



7		8	
REV:	ECN. NO.	NAME	DATE

THE DIMENSION FOR MATING BEZEL (UNIT: mm)								
CODE	L/P APPEARANCE	L/P CUT-OUT	L/P PITCH (FRONT)	L/P PITCH (REAR)	L/P HEIGHT	BEZEL THICKNESS	LED HEIGHT	REMARK
0	NO L/P							WITHOUT LIGHT PIPE
A	ROUND	∅2.67	4.00(Equal)	1,4=15.75 2,3=3.40	7.86	1.60	0.8~1.1	APPLIES TO QUAD L/P
		①	②	③	④	⑤	⑥	

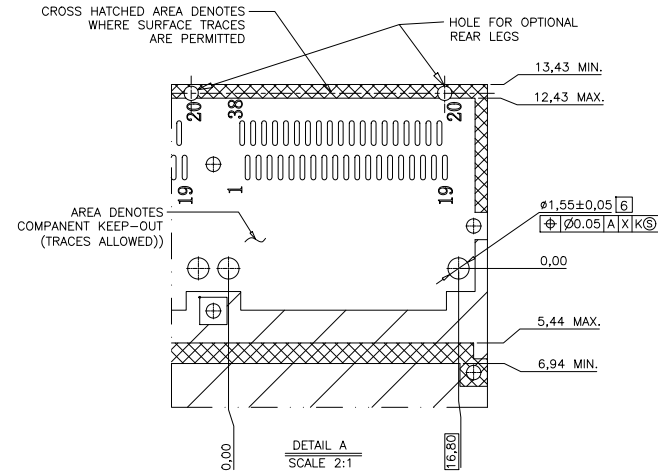
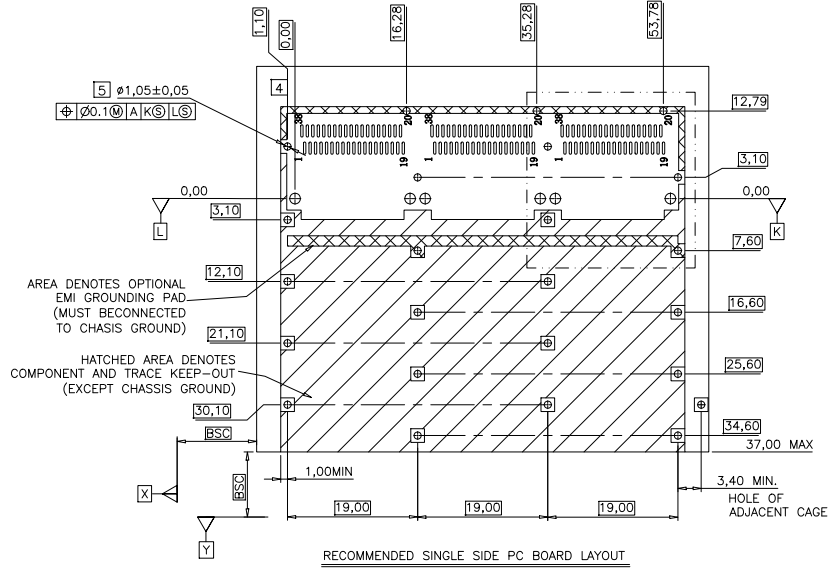


For technical support, please send an email to [support@vitalconn.com](mailto:support@vitalconn.com)

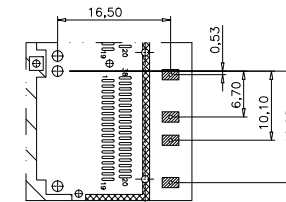
GENERAL TOLERANCE .X±0.30    .X±1° .XX±0.20    .XX±5° .XXX±0.10		<b>VITALCON</b> a vital connector company		FOR YOUR VITAL CONNECTION	
DRAWN BY: Zou Long		TITLE: QSFP+28G 1X3 CAGE		PART NO: S501312220SA4	
CHECKED BY: Bob		SIZE: A4		UNIT:mm	
APPROVED BY: QPF		PROJECTION		SHEET:3 OF 5	
		FCN: A4		http://www.vitalconn.com	



7		8	
REV:	ECN. NO.	NAME	DATE



FOR CAGE ASSEMBLIES WITH LIGHT PIPES



NOTES:

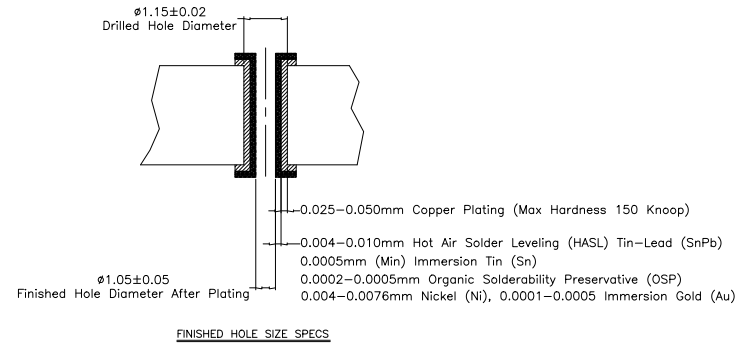
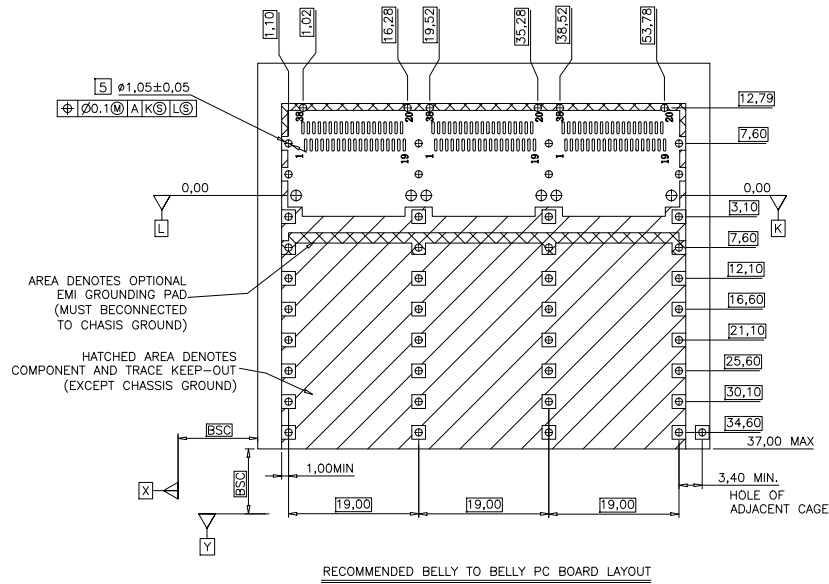
1. DATUM X & Y ARE ESTABLISHED BY THE CUSTOMER'S FIDUCIAL
2. DATUM A IS THE TOP SURFACE OF THE HOST BOARD
3. LOCATION OF THE EDGE OF PCB IS APPLICATION SPECIFIC
4. BASELINE FOR THESE DIMENSIONS IS THE CENTER OF COMPLIANT PIN HOLE.
5. FINISHED HOLE SIZE
6. UNPLATED THRU HOLE.
7. REFER TO SFF8662 FOR CONNECTOR FOOTING DIMENSIONS

For technical support, please send an email to [support@vitalconn.com](mailto:support@vitalconn.com)

GENERAL TOLERANCE .X±0.30 .X±1° .XX±0.20 .XX±5° .XXX±0.10		<b>VITALCON</b> a vital connector company		FOR YOUR VITAL CONNECTION	
DRAWN BY: Zou Long		PART NO: S501312220SA4		REV: A	
CHECKED BY: Bob		SIZE: A4		UNIT:mm	
APPROVED BY: QPF		PROJECTION		SHEET:4 OF 5	
				FCN: A4	
				http://www.vitalconn.com	



7		8	
REV:	ECN. NO.	NAME	DATE



For technical support, please send an email to [support@vitalconn.com](mailto:support@vitalconn.com)

GENERAL TOLERANCE .X±0.30 .X±1° .XX±0.20 .XX±5° .XXX±0.10		<b>VITALCON</b> a vital connector company		FOR YOUR VITAL CONNECTION	
TITLE:		QSFP+28G 1X3 CAGE			
DRAWN BY:	Zou Long	PART NO:	S501312220SA4	REV: A	
CHECKED BY:	Bob	SIZE: A4	UNIT:mm	SHEET:5 OF 5	FCN: A4
APPROVED BY:	QPF	PROJECTION		<a href="http://www.vitalconn.com">http://www.vitalconn.com</a>	