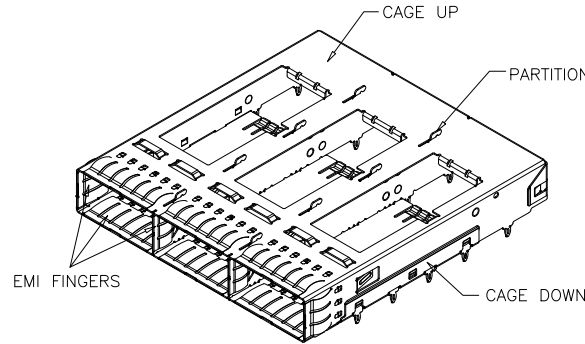
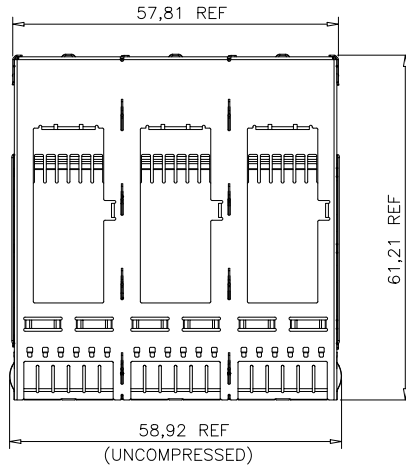
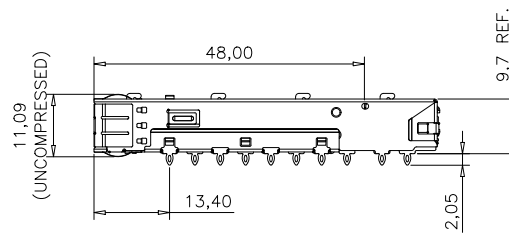
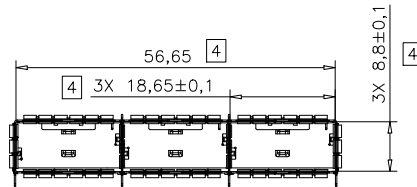




| 7 | | 8 | |
|------|----------|------|------|
| REV: | ECN. NO. | NAME | DATE |
| | | | |

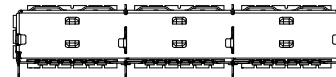
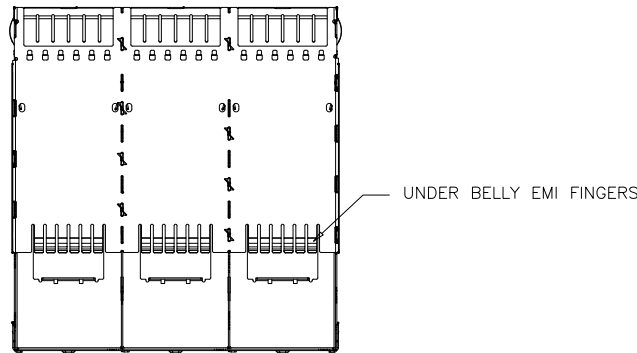


- MATERIALS:
 CAGE UP: STAINLESS STEEL, 0.25 THICKNESS
 CAGE DOWN: STAINLESS STEEL, 0.25 THICKNESS
 PARTITION: STAINLESS STEEL
 EMI FINGERS: STAINLESS STEEL
 HEATSINK: ALUMINUM
 HEATSINK CLIP: STAINLESS STEEL
 LIGHT PIPE MATERIAL: CLEAR POLYCARBONATE
 CAP: HIGH TEMPERATURE THERMOPLASTIC 94V-0, BLACK
- SURFACE FINISH:
 BODY CAGE: CLEANING
 EMI SPRING FINISH: CLEANING AND HOLE SEALING
 HEATSINK FINISH: BLACK ANODIZED
 HEATSINK CLIP FINISH: CLEANING
- MATE WITH QSFP MSA COMPATIBLE TRANSCEIVER.
- INSIDE SURFACE OF CASKET WHEN FULLY COMPRESSED.
- REFERENCE DOCUMENTS:
 PRODUCT SPECIFICATION: SFF-8663
- THIS PRODUCT COMPLY TO ROHS DIRECTIVE 2011/65/EU.



S5013 0 0 0 0 0 S A4
 1 2 3 4

- REAR LEGS.
 0=W/O REAR LEG
 1=W/ 1 REAR LEG
- LIGHT PIPE & CAP OPTION:
 0=W/O Light Pipe, W/O CAP
 1=W/ Light Pipe, W/O CAP
 2=W/ Light Pipe, W/ CAP
- LIGHT PIPE DIM "A" & PLATING OPTION:
 0=W/O Light Pipe
 1=DIM A=10.7mm, W/O Silver Color plating
 2=DIM "A"=9.7mm, W/O Silver Color plating
 3=DIM A=10.7mm, W/Silver Color plating
 4=DIM "A"=9.7mm, W/Silver Color plating
- PROCESS OPTION:
 0=W/O Heatsink, Open Top
 1=W/PCI(Heatsink 4.2mm)
 2=W/SAN(Heatsink 6.5mm)
 3=W/Networking(Heatsink 13.5mm)

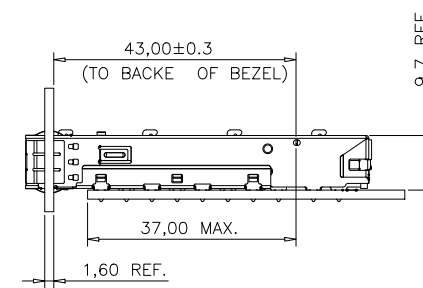
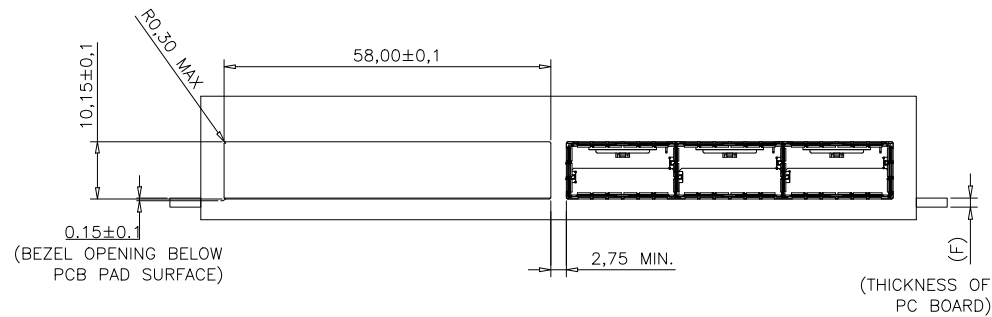


For technical support, please send an email to support@vitalconn.com

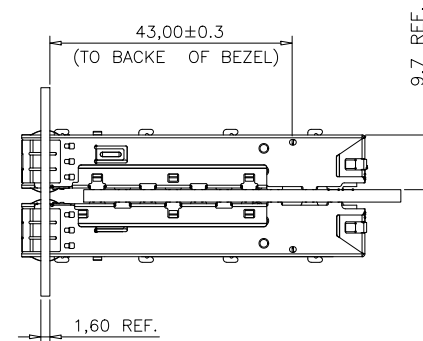
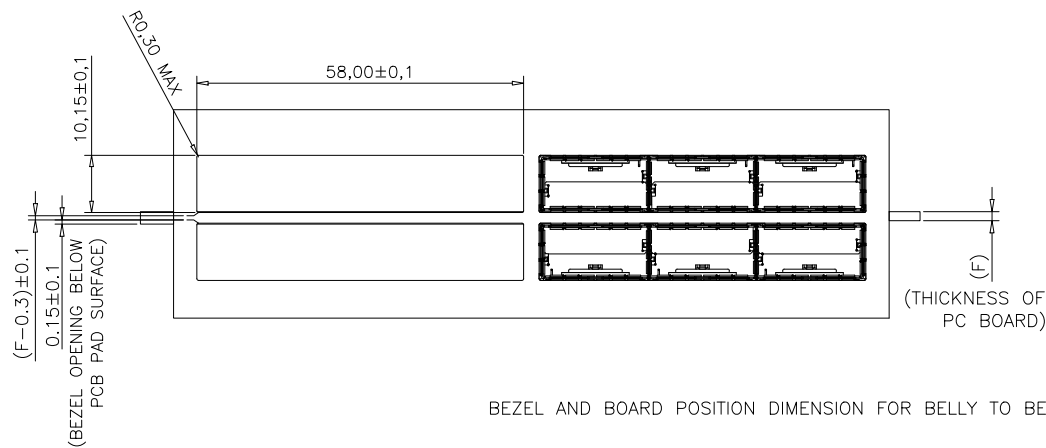
| | | | | | |
|--|----------|--|---------------|---|---------|
| GENERAL TOLERANCE .X±0.30 .X±1° .XX±0.20 .XX±5° .XXX±0.10 | | VITALCON a vital connector company | | FOR YOUR VITAL CONNECTION | |
| TITLE: | | QSFP+28G 1X3 CAGE | | | |
| DRAWN BY: | Zou Long | PART NO: | S501300000SA4 | REV: A | |
| CHECKED BY: | Bob | SIZE: A4 | UNIT:mm | SHEET:1 OF 4 | FCN: A4 |
| APPROVED BY: | QPF | PROJECTION | | http://www.vitalconn.com | |



| 7 | | 8 | |
|------|----------|------|------|
| REV: | ECN. NO. | NAME | DATE |
| | | | |
| | | | |



BEZEL AND BOARD POSITION DIMENSION FOR SINGLE SIDE MOUNTING



BEZEL AND BOARD POSITION DIMENSION FOR BELLY TO BELLY MOUNTING

NOTES:

1. THE NORMAL THICKNESS OF CUSTOMER SUPPLIED PC BOARD.(DIM. "F")
SINGLE SIDED PC BOARD THICKNESS: 1.60mm MIN.
BELLY TO BELLY PC BOARD MIN. THICKNESS: 3.0mm MIN.
2. GENERAL TOLERANCE: ±0.05.

| GENERAL TOLERANCE | |
|-------------------|--------|
| .X±0.30 | .X±1° |
| .XX±0.20 | .XX±5° |
| .XXX±0.10 | |



FOR YOUR VITAL CONNECTION

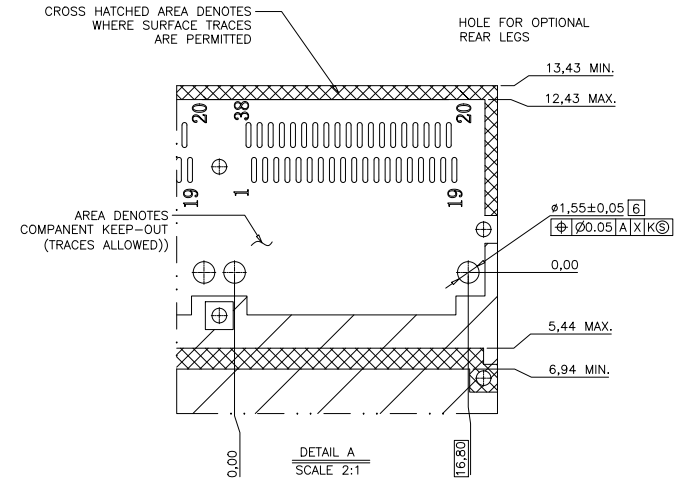
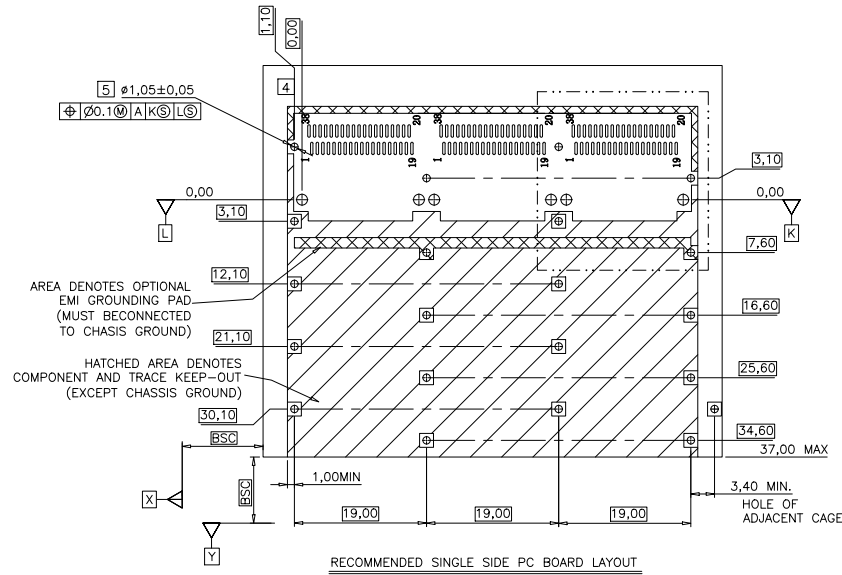
TITLE: QSF+28G 1X3 CAGE

| | | | | |
|--|----------|--------------------------|---------------|--------------|
| DRAWN BY: | Zou Long | PART NO: | S501300000SA4 | REV: A |
| CHECKED BY: | Bob | SIZE: A4 | UNIT:mm | SHEET:2 OF 4 |
| APPROVED BY: | QPF | PROJECTION | | FCN: A4 |
| For technical support, please send an email to support@vitalconn.com | | http://www.vitalconn.com | | |

For technical support, please send an email to support@vitalconn.com



| 7 | | 8 | |
|------|----------|------|------|
| REV: | ECN. NO. | NAME | DATE |
| | | | |
| | | | |



FOR CAGE ASSEMBLIES WITH LIGHT PIPES

NOTES:

- [1] DATUM X & Y ARE ESTABLISHED BY THE CUSTOMER'S FIDUCIAL
- [2] DATUM A IS THE TOP SURFACE OF THE HOST BOARD
- [3] LOCATION OF THE EDGE OF PCB IS APPLICATION SPECIFIC
- [4] BASELINE FOR THESE DIMENSIONS IS THE CENTER OF COMPLIANT PIN HOLE.
- [5] FINISHED HOLE SIZE
- [6] UNPLATED THRU HOLE.
7. REFER TO SFF8662 FOR CONNECTOR FOOTING DIMENSIONS

For technical support, please send an email to support@vitalconn.com

GENERAL TOLERANCE
 .X±0.30 .X±1°
 .XX±0.20 .XX±5°
 .XXX±0.10



FOR YOUR VITAL CONNECTION

TITLE:

QSFP+28G 1X3 CAGE

DRAWN BY:

Zou Long

PART NO:

S501300000SA4

REV: A

CHECKED BY:

Bob

SIZE: A4

UNIT:mm

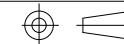
SHEET:3 OF 4

FCN: A4

APPROVED BY:

QPF

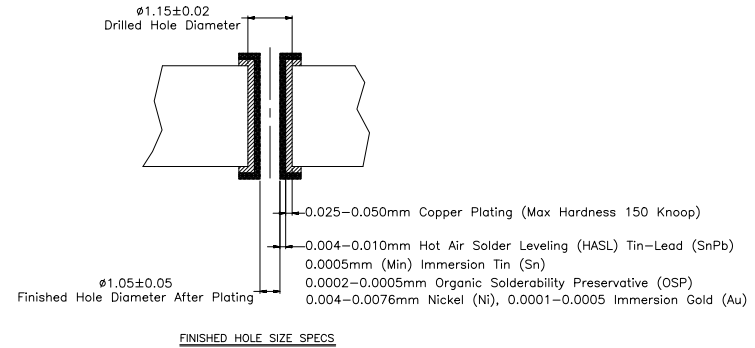
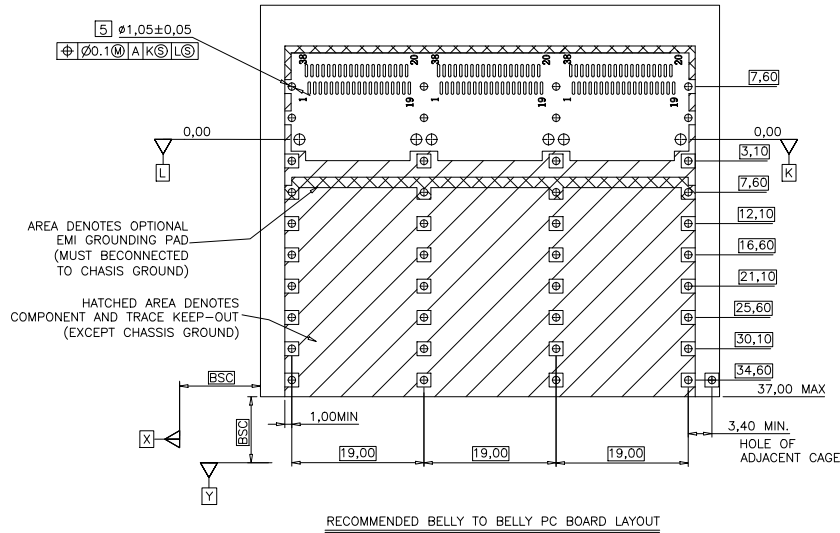
PROJECTION



<http://www.vitalconn.com>



| 7 | | 8 | |
|------|----------|------|------|
| REV: | ECN. NO. | NAME | DATE |
| | | | |
| | | | |



RECOMMENDED BELLY TO BELLY PC BOARD LAYOUT

| | | | | | |
|--|----------|--|--------------|---------------------------|---------|
| GENERAL TOLERANCE .X±0.30 .X±1° .XX±0.20 .XX±5° .XXX±0.10 | | VITALCON a vital connector company | | FOR YOUR VITAL CONNECTION | |
| TITLE: | | QSFP+28G 1X3 CAGE | | | |
| DRAWN BY: | Zou Long | PART NO: | S50130000SA4 | REV: A | |
| CHECKED BY: | Bob | SIZE: A4 | UNIT:mm | SHEET:4 OF 4 | FCN: A4 |
| APPROVED BY: | QPF | PROJECTION | | http://www.vitalconn.com | |

For technical support, please send an email to support@vitalconn.com