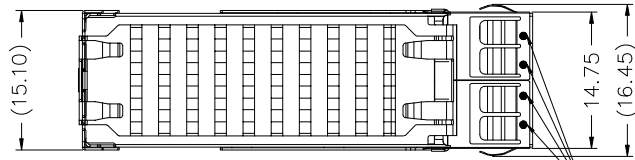
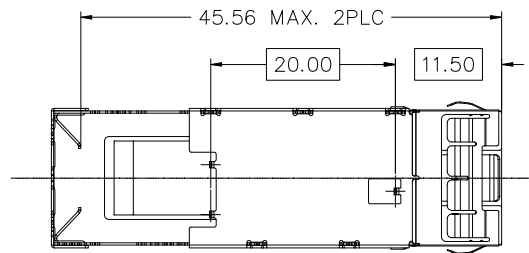
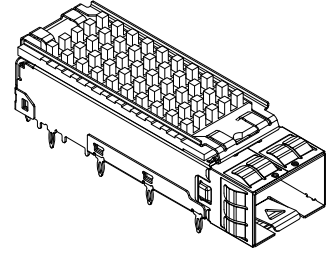
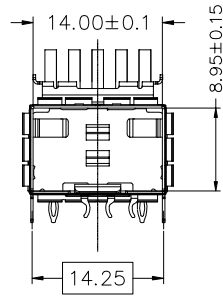
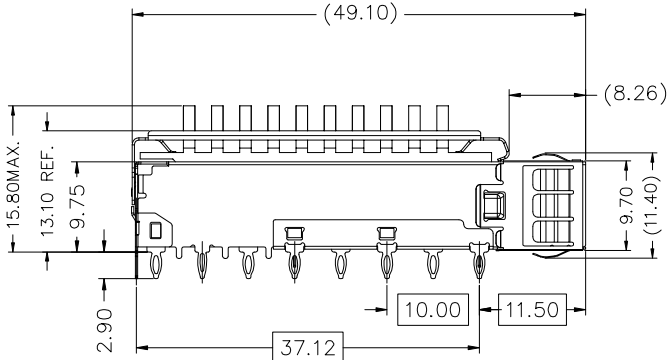




7	8
REV:	ECN. NO.
NAME	DATE



LASER BEAM WELDING POINT



- NOTES:  
 1.MATERIAL:  
 CAGE: COPPER ALLOY,NI PLATING(0.5um min),THICKNESS 0.25mm  
 HEAT SINK : ALUMINUM(SURFACE TREATMENT:  
 BLACK OXIDE)  
 CLIP: STAINLESS STEEL  
 2.PACKAGING: TRAY PACKAGING  
 3.TEMPERATURE RANGE: -55°C TO +85°C

TOLERANCE UNSPECIFIED	
.0	±0.38
.00	±0.25
.000	±0.10
ANGLE	±2.00°
MANUFACTURING COPY	



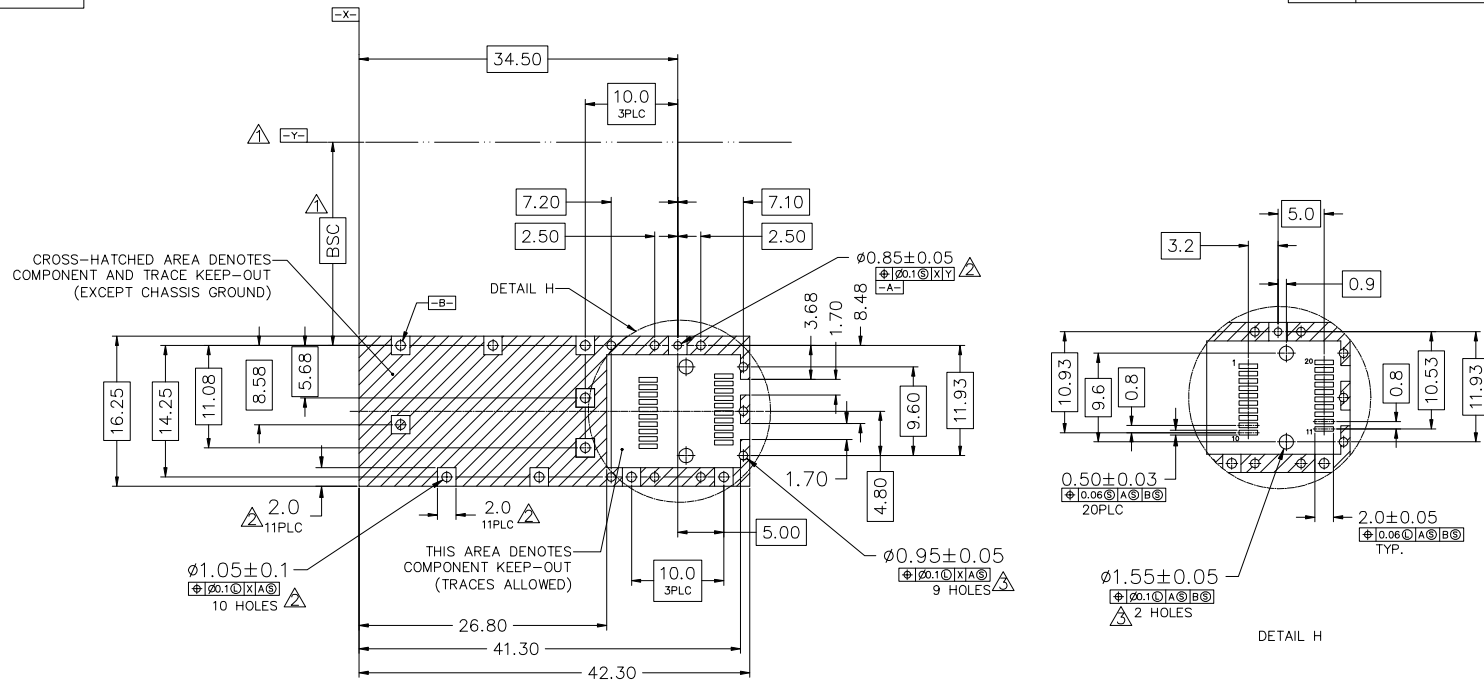
FOR YOUR VITAL CONNECTION

TITLE:	SFP+ 1X1 CAGE,WITH HEAT SINK		
DRAWN BY:	QSY	PART NO:	S2N3122055NA4
CHECKED BY:	VIT	SIZE: A4	UNIT:mm
APPROVED BY:	QPF	PROJECTION	http://www.vitalconn.com

For technical support, please send an email to support@vitalconn.com



REV:	ECN. NO.	NAME	DATE



RECOMMENDED PCB CONFIGURATION

- NOTES:
- △ DATUM AND BASIC DIMENSIONS ESTABLISHED BY CUSTOMER
  - △ PADS AND VIAS ARE CHASSIS GROUND, 11 PLACES
  - △ THRU HOLES, PLATING OPTIONAL

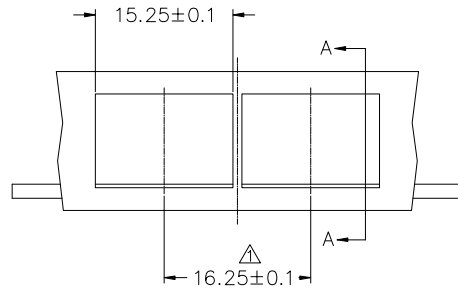
For technical support, please send an email to support@vitalconn.com

TOLERANCE UNSPECIFIED		 <b>VITALCON</b> a vital connector company		FOR YOUR VITAL CONNECTION	
.0	±0.38				
.00	±0.25	TITLE:		SFP+ 1X1 CAGE, WITH HEAT SINK	
.000	±0.10	DRAWN BY: QSY		PART NO: S2N3122055NA4	
ANGLE	±2.00°	CHECKED BY: VIT		REV: A	
MANUFACTURING COPY		APPROVED BY: QPF		SIZE: A4	
		PROJECTION		UNIT: mm	
				SHEET: 2 OF 4	
				FCN: A4	
				 <a href="http://www.vitalconn.com">http://www.vitalconn.com</a>	

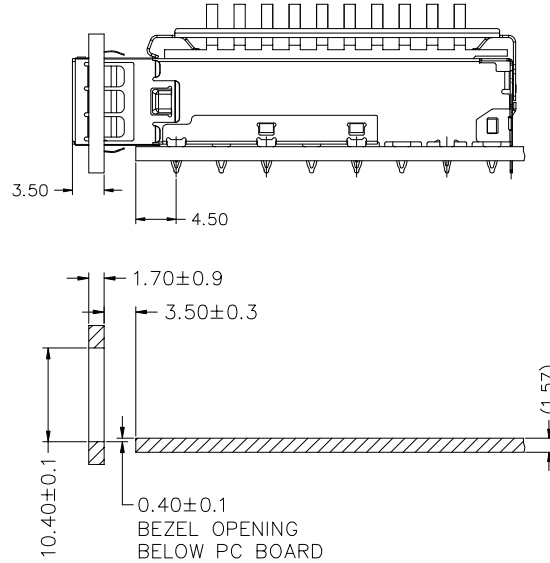


7		8	
REV:	ECN. NO.	NAME	DATE

NOTES:  
 ▲ MINIMUM PITCH ILLUSTRATED, ENGLISH DIMENSIONS ARE FOR REFERENCE ONLY



RECOMMENDED BEZEL DESIGN



SECTION A-A

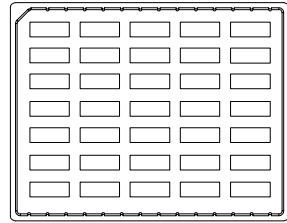
TOLERANCE UNSPECIFIED				FOR YOUR VITAL CONNECTION	
.0	±0.38				
.00	±0.25	TITLE: SFP+ 1X1 CAGE, WITH HEAT SINK			
.000	±0.10	DRAWN BY: QSY	PART NO: S2N3122055NA4	REV: A	
ANGLE	±2.00°	CHECKED BY: VIT	SIZE: A4	UNIT: mm	SHEET: 3 OF 4 FCN: A4
MANUFACTURING COPY		APPROVED BY: QPF	PROJECTION	<a href="http://www.vitalconn.com">http://www.vitalconn.com</a>	

For technical support, please send an email to [support@vitalconn.com](mailto:support@vitalconn.com)

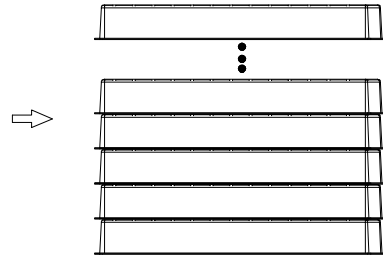


7	8
REV:	ECN. NO.
NAME	DATE

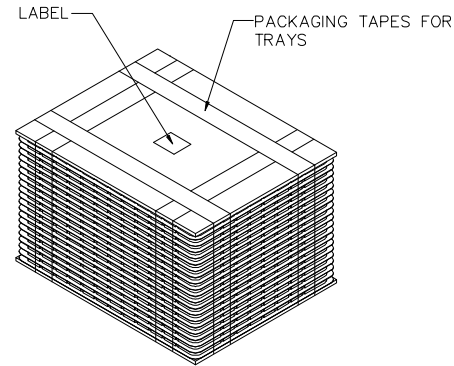
PACKAGE INFORMATION AND LABEL



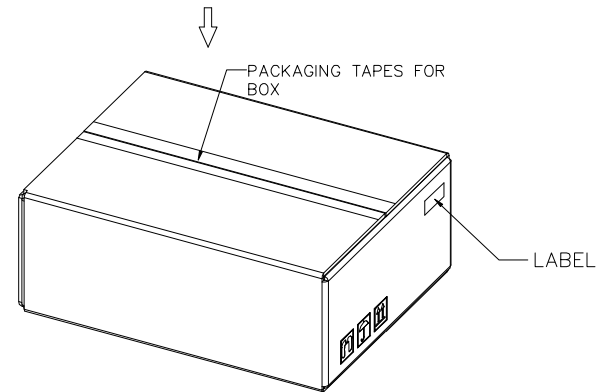
1. 35PCS PRODUCTS IN TRAYS



2. 8PCS TRAYS OVERLAY:  
(THE NEXT TRAY NEED ROTATE 180 DEGREE AND PUT IT ON PREVIOUS TRAY.)  
(相邻两个吸塑间水平方向成180度摆放)



3. LABEL & PACKAGING TAPES FOR TRAYS:



4. LABEL & PACKAGING TAPES FOR BOX

PACKAGING LISTS	
ITEM	Q'TY
PRODUCT	280 PCS
TRAY	8 PCS
BOX(L340*W265*H200MM)	1 PCS
LABLE	2 PCS
PACKAGING TAPES	8 M (ABOUT)

TOLERANCE UNSPECIFIED		 <b>VITALCON</b> a vital connector company		FOR YOUR VITAL CONNECTION	
.0	±0.38			SFP+ 1X1 CAGE, WITH HEAT SINK	
.00	±0.25	TITLE:		REV: A	
.000	±0.10	PART NO:		S2N3122055NA4	
ANGLE	±2.00°	SIZE: A4		UNIT:mm	SHEET: 4 OF 4
MANUFACTURING COPY		PROJECTION		FCN: A4	
DRAWN BY:	QSY	APPROVED BY:		QPF	
CHECKED BY:	VIT	PROJECTION		 <a href="http://www.vitalconn.com">http://www.vitalconn.com</a>	

For technical support, please send an email to [support@vitalconn.com](mailto:support@vitalconn.com)