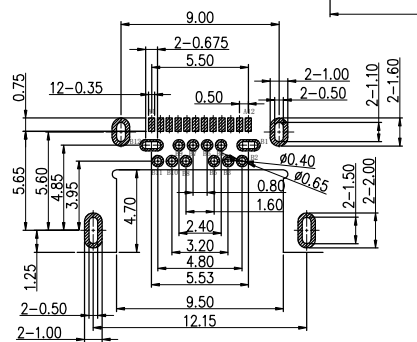
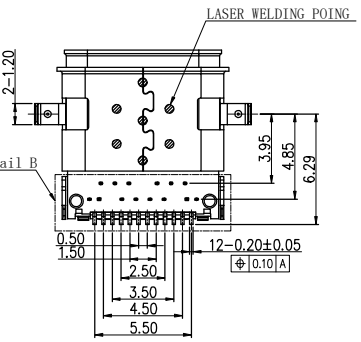
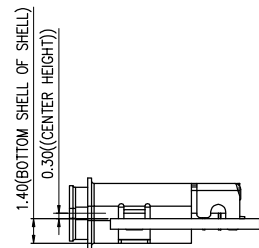
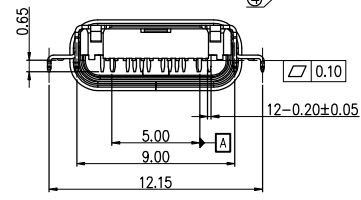
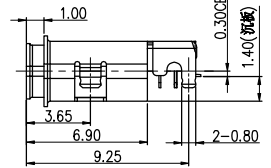
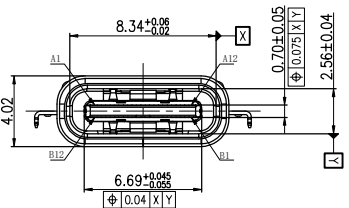
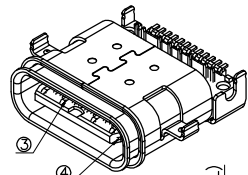
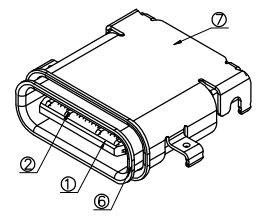
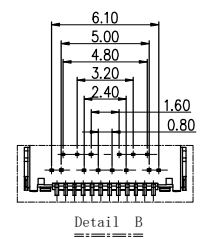
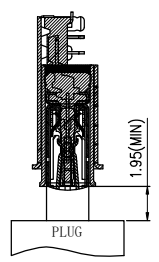
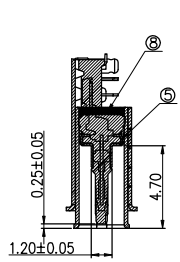
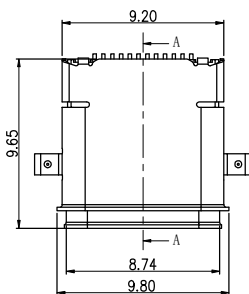


REV:	ECN. NO.	NAME	DATE



RECOMMENDED P.C.B LAYOUT(Both sides are sample)
Tolerance: ±0.05, Thickness=0.60mm

Pin	Signal Name	Mating Sequence	Pin	Signal Name	Mating Sequence
A1	GND	First	B12	GND	First
A2	SSTxp1	Second	B11	SSKxp1	Second
A3	SSTxn1	Second	B10	SSKxn1	Second
A4	Vm	First	B9	Vm	First
A5	OC1	Second	B8	SBU2	Second
A6	Dp1	Second	B7	Dn2	Second
A7	Dn1	Second	B6	Dp2	Second
A8	SBU1	Second	B5	OC2	Second
A9	Vm	First	B4	Vm	First
A10	SSKxn2	Second	B3	SSTxn2	Second
A11	SSKxp2	Second	B2	SSTxp2	Second
A12	GND	First	B1	GND	First
SHELL	GND		SHELL	GND	

- NOTES:
 1. MATERIAL: 铜镍硅合金;
 2. FINISH: G/F;
 3. ELECTRICAL :
 3-1.CONTACT CURRENT RATING :
 5A(BUS PIN 1.5A/PIN),
 5A(GND PIN 1.25A/PIN MAX),0.25A/PIN(OTHER PIN).
 3-2.INSULATION RESISTANCE :
 100 MEGAOMHS MIN. AT 250VDC.
 3-3.DIELECTRIC WITHSTANDING VOLTAGE :
 100VAC MIN.
 3-4.LOW LEVEL CONTACT RESISTANCE :
 INITIAL 40mΩ MAX.
 AFTER 50mD MAX.
 3-5.Voltage Rating:20V Max.
 4.MECHANICAL CHARACTERISTICS :
 4-1. MATING FORCE: 5-20N;
 4-2. UNMATING FORCE: 8-20N(INITIAL),6-20N(AFTER 10000 CYCLES);
 4-3.DURABILITY : 10,000 MATING CYCLES.
 4-4.OPERATING TEMPERATURE : -40°C TO +80°C
 4-5.Salt Spray Test:48H Min.(No oxidation or rust).

TABLE 1:

NO.	PART NAME	QTY	MATERIAL	DESCRIPTION	REMARK
⑧	GLUE WATER	1	EPOXY	BLACK	
⑦	Shell-2	1	Stainless steel	NI PLATING;	T=0.20mm
⑥	Shell-1	1	Stainless steel	NI PLATING;	T=0.20mm
⑤	GND PLATE	1	Stainless steel	NI PLATING;	T=0.10mm
④	MID PLATE	1	Stainless steel		T=0.15mm
③	Terminal-B	12	铜镍硅合金	SEE PART No.	T=0.12mm
②	Terminal-A	12		SEE PART No.	T=0.12mm
①	Housing	1	HIGH TEMP	Black	

PART No.:

U-104XX0572E1

USB SERIES
 PLATING:
 31: Au3u"+G/F
 36: Au15u"+G/F

PAKING:
 2: REEL
 SERIAL NO.



RoHS Compliant

For technical support, please send an email to support@vitalconn.com

TOLERANCE UNSPECIFIED	
.0	±0.38
.00	±0.25
.000	±0.10
ANGLE	±3.00°
MANUFACTURING COPY	

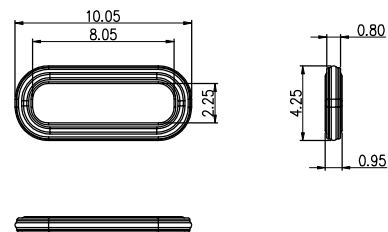
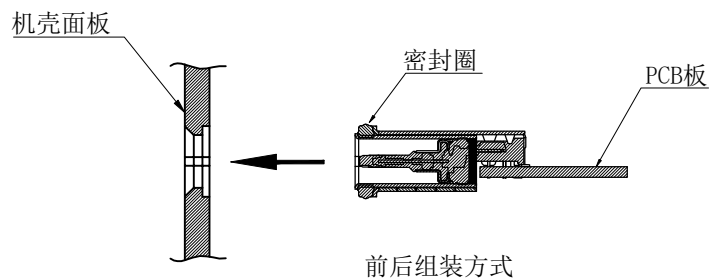


FOR YOUR VITAL CONNECTION

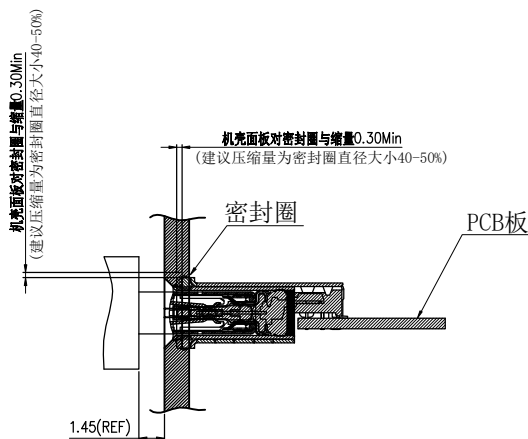
TITLE:	TYPE C 24PIN防水 前插后贴 CL=0.3 沉板1.40mm		
DRAWN BY:	QSY	PART NO:	U-104XX0572E1
CHECKED BY:	VIT	SIZE: A4	UNIT:mm
APPROVED BY:	QPF	PROJECTION	http://www.vitalconn.com

建议密封方式

7	8
REV:	ECN. NO.
NAME	DATE



建议防水圈规格 (材质硅橡胶)



组装面板后公母头对插示意图



RoHS Compliant 

For technical support, please send an email to support@vitalconn.com

TOLERANCE UNSPECIFIED		VITALCON a vital connector company		FOR YOUR VITAL CONNECTION	
.0	±0.38	TITLE:		TYPE C 24PIN防水 前插后贴 CL=0.3 沉板1.40mm	
.00	±0.25	DRAWN BY: QSY		PART NO: U-104XX0572E1	
.000	±0.10	CHECKED BY: VIT		REV: A	
ANGLE ±3.00°	MANUFACTURING COPY	SIZE: A4		UNIT:mm	
APPROVED BY: QPF		PROJECTION		SHEET: 2 OF 3	
				FCN: E1	
				http://www.vitalconn.com	

1

2

3

4

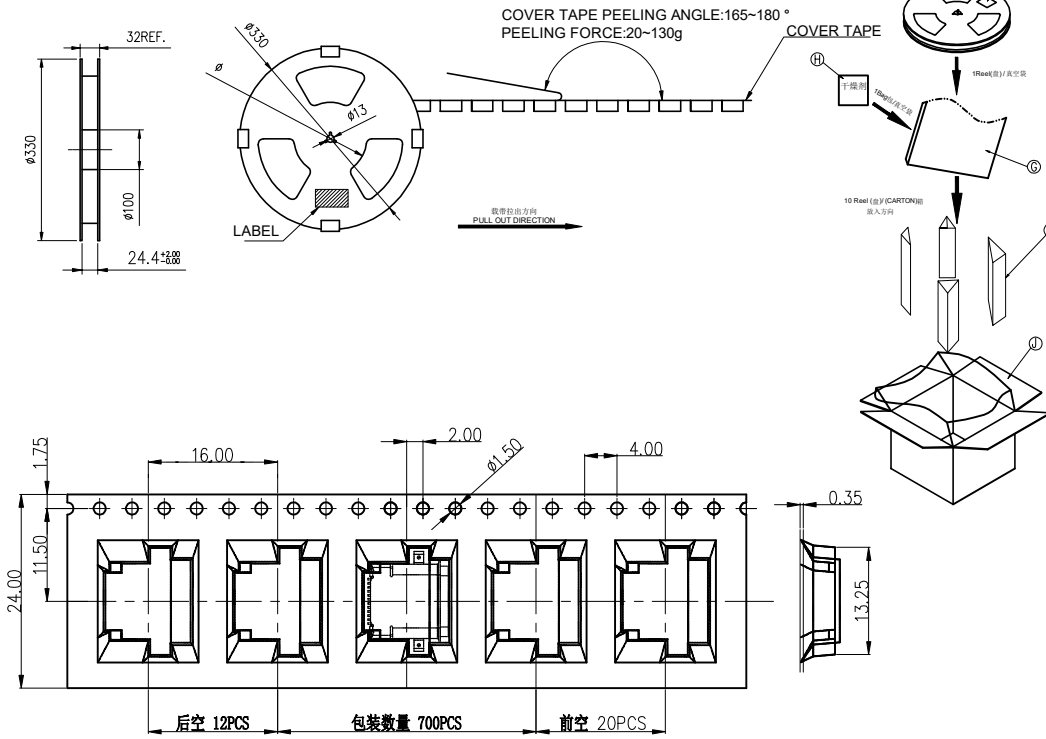
5

6

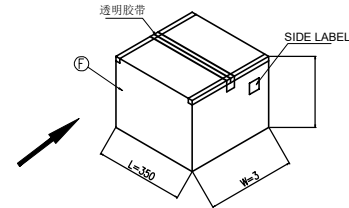
7

8

REV:	ECN. NO.	NAME	DATE

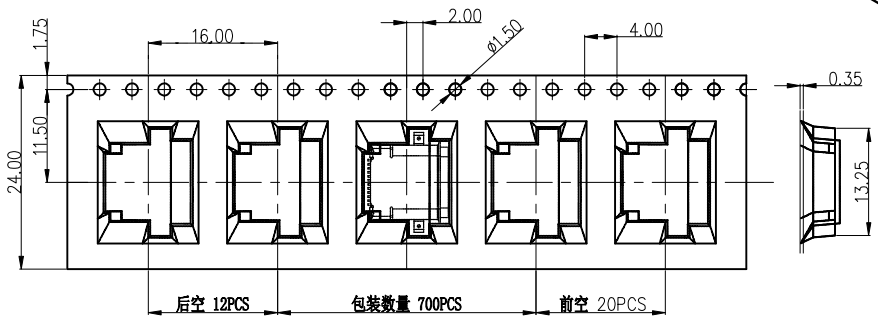


- 包装方式:
- 第一步: 产品使用包装机入包装盘
- (1) 首先将包装盘贴上标签
 - (2) 再将成品按照规定的所示方向摆放在料带中进行包装
 - (3) 每盘包装数量700PCS成品
- 第二步: 包装盘入外箱
- (1) 将包装完的包装盘每1盘装入1个真空袋中
 - (2) 每个真空袋中放入一包干燥剂, 并做真空包装处理
 - (3) 将10个真空袋, 共10盘/7000PCS放入置入外箱的PE袋中
- 第三步: 外箱封口&贴标签
- (1) 先确认外箱里是否有10盘产品
 - (2) 包装完成后使用透明胶带封口, 贴LABEL于规定的位置
- 第四步: 储存&运输
- (1) 储存在通风, 干燥环境; 搬运时轻拿轻放



防水胶圈包装(两者独立包装)

5000	6	30000
PCS/BAG	BAG/CASE	PCS/CASE



J	PE袋	1	630L*620W
I	三角护柱	4	
H	干燥剂	10	
G	真空袋	10	500L*450W
F	纸箱	1	350L*340W*310H
E	标签	10	
D	REEL	10	
C	COVER TAPE	10	21.3m/m (1R/300M)
B	CARRIER TAPE	10	12511(L)*24(W)*0.4(T)
A	PRODUCT	7000	104380572
NO	DESCRIPTION	Q'TA(PCS)	SPEC

RoHS Compliant

TOLERANCE UNSPECIFIED		VITALCON a vital connector company		FOR YOUR VITAL CONNECTION	
.0	±0.38	TITLE:		TYPE C 24PIN防水 前插后贴 CL=0.3 沉板1.40mm	
.00	±0.25	DRAWN BY: QSY		PART NO: U-104XX0572E1	
.000	±0.10	CHECKED BY: VIT		REV: A	
ANGLE ±3.00°	MANUFACTURING COPY	APPROVED BY: QPF		SIZE: A4	
DRAWN BY: QSY		CHECKED BY: VIT		UNIT:mm	
CHECKED BY: VIT		APPROVED BY: QPF		SHEET: 3 OF 3	
APPROVED BY: QPF		PROJECTION		FCN: E1	
				http://www.vitalconn.com	

For technical support, please send an email to support@vitalconn.com

1

2

3

4

5

6

7

8