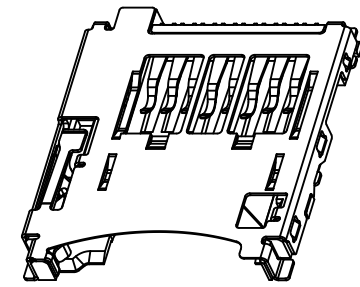
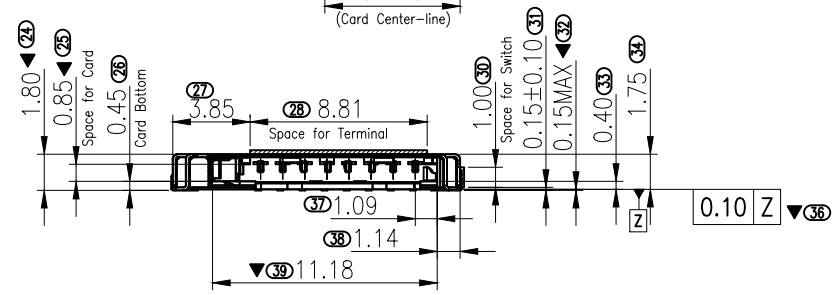
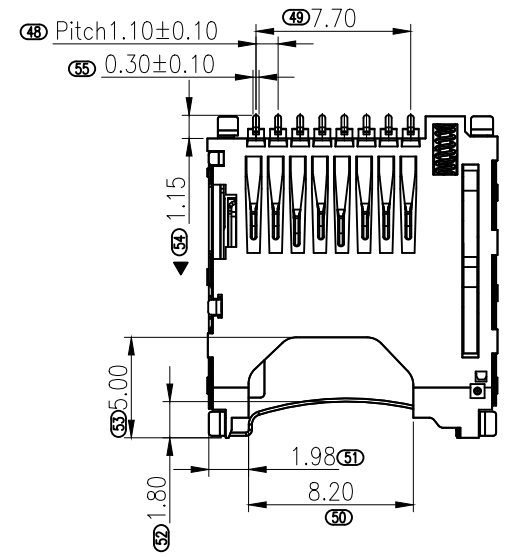
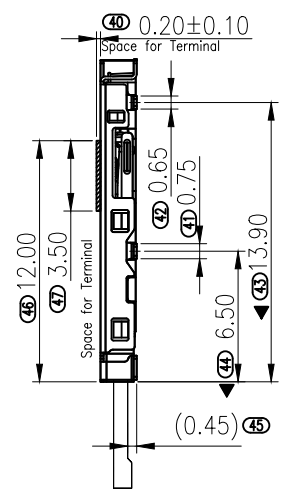
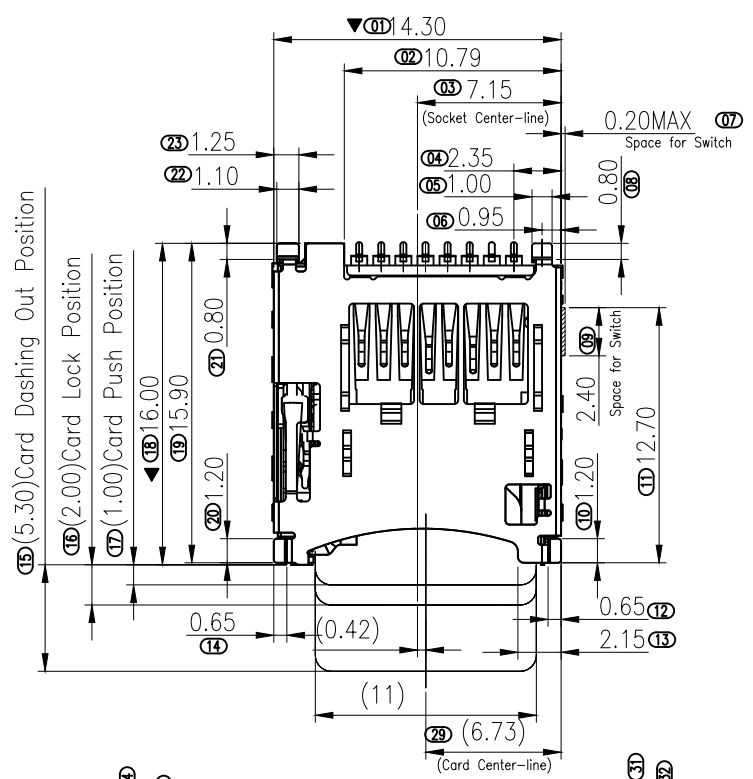


REV:	ECN. NO.	NAME	DATE



PIN ASSIGNMENT

Pin No.	PIN ASSIGNMENT
P1	MICRO SD_DAT2
P2	MICROSD SD_CD/DAT3
P3	MICRO SD_CMD
P4	MICRO SD_VDD
P5	MICRO SD_CLK
P6	MICRO SD_VSS
P7	MICRO SD_DAT0
P8	MICRO SD_DAT1

RoHS Compliant

NO	Description	Dosage	Material	Color/plating
9	LOCK PIN	1PC	SUS304	Ni: 30u"min
8	CD PIN	1PC	C5210	Contact gold flash plating ; solder plating gold flash
7	SW PIN	1PC	C5210	Contact gold flash plating ; solder plating gold flash
6	SLIDER	1PC	E130I 30%G.F	UL94V-0; Color BLACK
5	SPRING	1PC	SWP-B	Ni: 30u"min
4	HOOK	1PC	SUS304	Ni: 30u"min
3	Housing	1PC	S475 30%G.F	UL94V-0; Color BLACK
2	Shell	1PC	SUS304	Solder plating gold flash
1	Termiral	1PC	C5210	Contact gold flash plating ; solder plating gold flash

MILLIMETERS	INCH
X.° ± 2°	X.° ± 2°
.X ± 0.30	.X ± 0.010
.XX ± 0.20	.XX ± 0.008
.XXX ± 0.10	.XXX ± 0.004



FOR YOUR VITAL CONNECTION

DRAWN BY:	Zou Long	TITLE:	N MICRO SD BOT 1.8PP	
CHECKED BY:	Bob	PART NO:	VTC102322702	REV: A
APPROVED BY:	QPF	SIZE: A4	UNIT:mm	SHEET:1 OF 3 FCN: E1
		PROJECTION		http://www.vitalconn.com

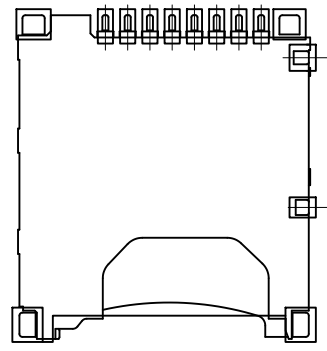
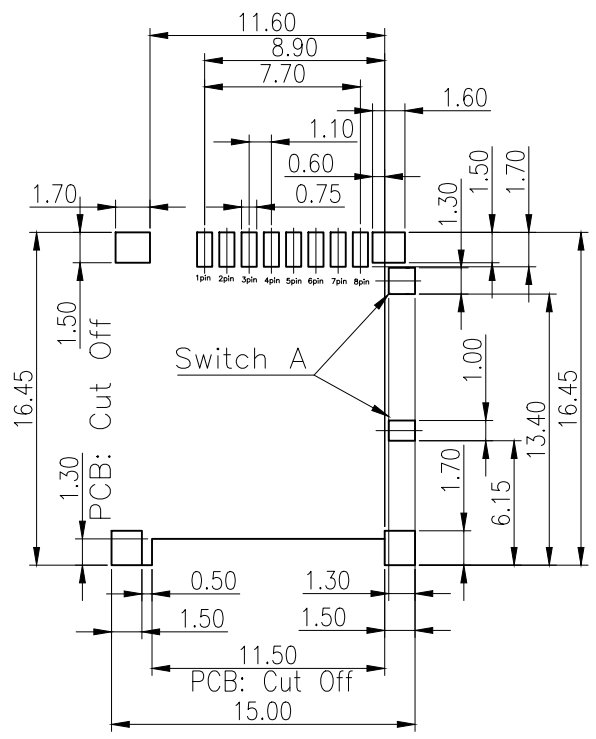
A
B
C
D
E
F

A
B
C
D
E
F

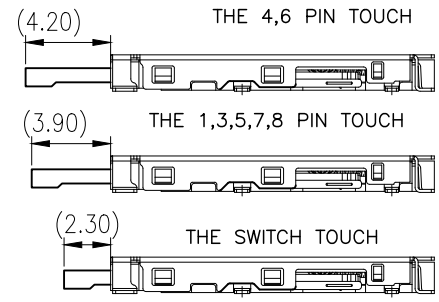
1 2 3 4 5 6 7 8

1 2 3 4 5 6 7 8

7		8	
REV:	ECN. NO.	NAME	DATE



Connector on Pattern

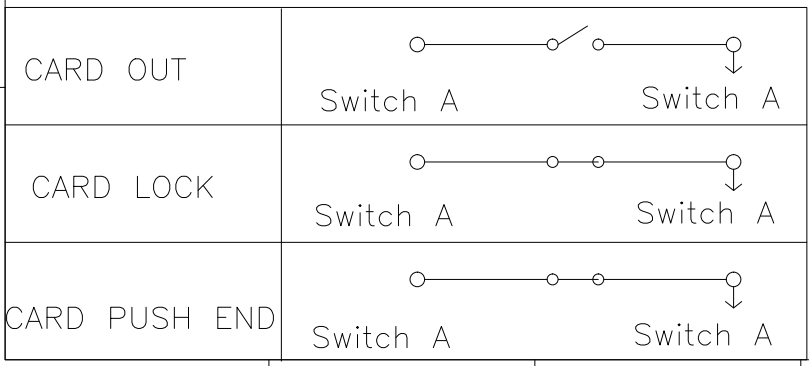


- NOTES:
- Material
Housing:LCP 30%G/F UL94V-0 Black
Terminal:Phosphor Bronze T=0.12
Cover:SUS304 T=0.15
 - Plating:
Terminal:
Contact Area:3u"Au
Solder Area:Gold Flash
Underplating:Ni Overall 50u" Min
Cover:
Solder Area:Gold Flash
Underplating:Ni Overall 30u" Min
 - Technical Speciality:
Rated Voltage: 30V
Current Rating: 0.5A
Insulation Resistance:1000MΩ Min.
Contact Resistance:100mΩ Max.
Withstanding Voltage: 500V DC For 1 Minutes.
 - Mechanical&Environmental
Operating Temperature:-45t to +75t
Durability:5000 cycles

Recommended PCB Pattern Layout
General Tolerance: ±0.05

RoHS Compliant

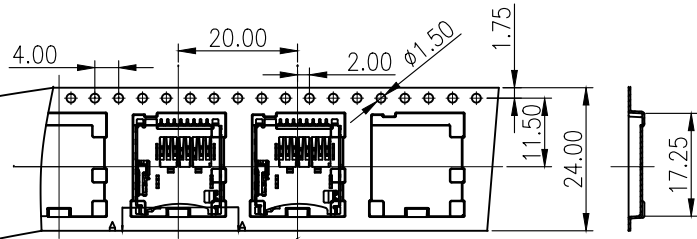
Circuit Diagram for Detect Switch



MILLIMETERS X.° ± 2° .X ± 0.30 .XX ± 0.20 .XXX ± 0.10	INCH X.° ± 2° .X ± 0.010 .XX ± 0.008 .XXX ± 0.004	VITALCONN a vital connector company		FOR YOUR VITAL CONNECTION	
		TITLE:	N MICRO SD BOT 1.8PP		
DRAWN BY:	Zou Long	PART NO:	VTC102322702	REV: A	
CHECKED BY:	Bob	SIZE: A4	UNIT:mm	SHEET:2 OF 3	FCN: E1
APPROVED BY:	QPF	PROJECTION		http://www.vitalconn.com	

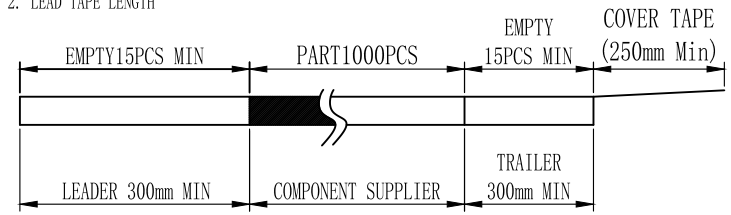
7		8	
REV:	ECN. NO.	NAME	DATE

USER DIRECTION OF UNREELING →

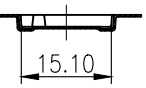


NOTES

1. NUMBER OF CONNECTORS: 1000PCS/REEL
2. LEAD TAPE LENGTH

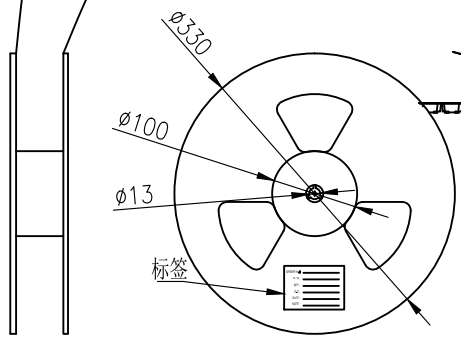


3. QUANTITY: 5000PCS/CARTON

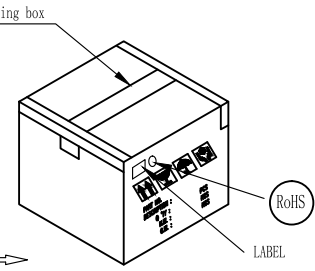
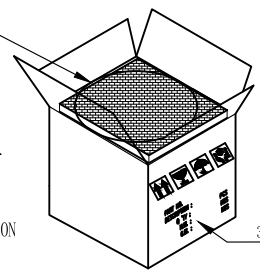
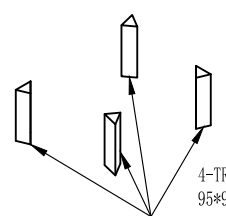


COVER TAPE PEELING ANGLE: 165°~180°
PEELING FORCE: 20~130g

CARRIER TAPE



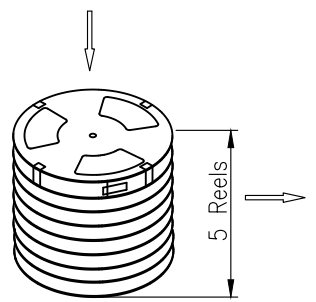
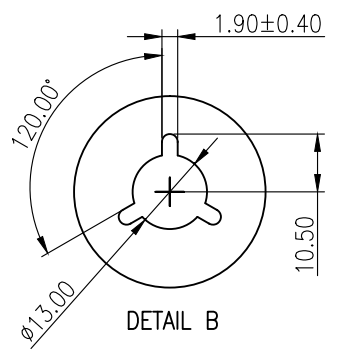
Each top of the bottom of the carton is protected by a piece of pearl cotton


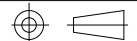


CARTON 335*335*176 K=K

5 rolls per carton

RoHS Compliant



MILLIMETERS X.° ± 2° .X ± 0.30 .XX ± 0.20 .XXX ± 0.10	INCH X.° ± 2° .X ± 0.010 .XX ± 0.008 .XXX ± 0.004	 VITALCONN a vital connector company	FOR YOUR VITAL CONNECTION	
TITLE: N MICRO SD BOT 1.8PP			DRAWN BY: Zou Long	
CHECKED BY: Bob		PART NO: VTC102322702	REV: A	
APPROVED BY: QPF		SIZE: A4	UNIT: mm	SHEET: 3 OF 3
PROJECTION				http://www.vitalconn.com