

CONNECTING THE INFORMATION WORLD

To be a vital connector partner of yours

VITALCONN
a vital connector company

The Catalogue

of DC Power Jack Series

By VITALCONN Product Team

www.vitalconn.com

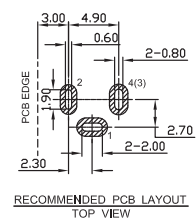
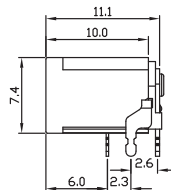
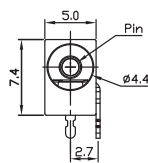


YOUR VITAL CONNECTOR PARTNER

Specification

1. Rating : 1A 30VDC / 3A 12VDC / 5A 12VDC
2. Withstanding voltage AC 500V, 50 or 60Hz for 1 minute
3. Insulation resistance (initial) 100M Ω (min.) at 500VDC
4. Contact resistance (initial) 50m Ω max. at AC 100mA(max) 1KHz
5. Insertion & Extraction force
Initial :0.3 to 3.0Kgf
After life test :0.3 to 3.0Kgf
6. Life test (10-20 cycle/minute) 5,000 cycles unloading

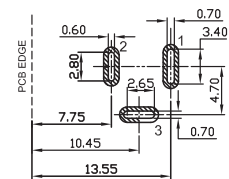
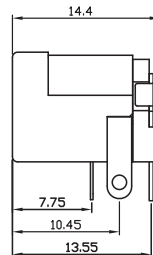
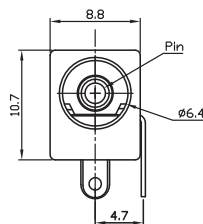
SHD-1302(Pin1.3 ϕ)/SHD-1702J(Pin1.65 ϕ)



SCHEMATIC



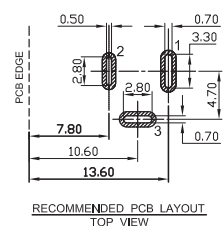
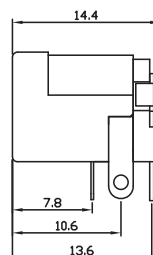
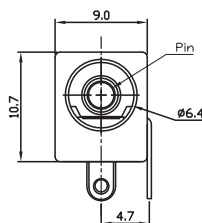
ASHD-2014(Pin2.0 ϕ)/ASHD-2014A(Pin2.5 ϕ)/ASHD-2014C(Pin1.65 ϕ)



SCHEMATIC



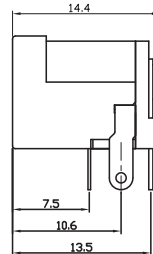
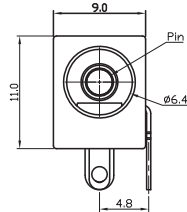
SHD-2014(Pin2.0 ϕ)/SHD-2014A(Pin2.5 ϕ)/SHD-2014C(Pin1.65 ϕ)



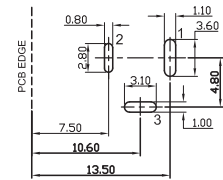
SCHEMATIC



SHD-2014R(Pin2.0 ϕ) / SHD-2014AR(Pin2.5 ϕ)

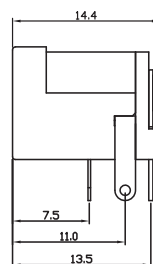
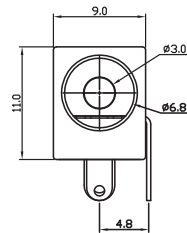


SCHMATIC

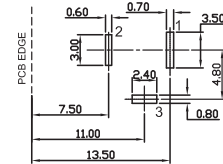


RECOMMENDED PCB LAYOUT
TOP VIEW

SHD-2014D(Pin3.0 ϕ)

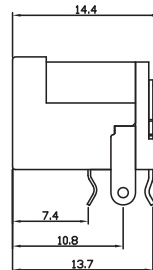
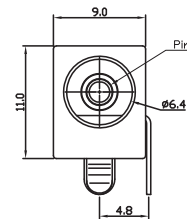


SCHMATIC

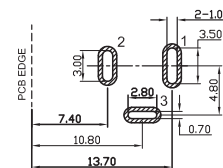


RECOMMENDED PCB LAYOUT
TOP VIEW

SHD-2014K(Pin2.0 ϕ) / SHD-2014KA(Pin2.5 ϕ)

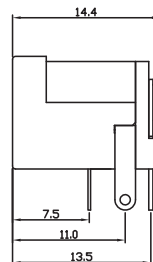
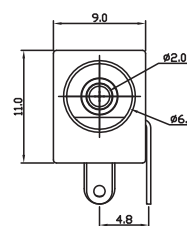


SCHMATIC

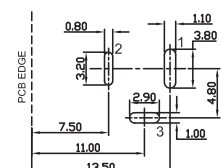


RECOMMENDED PCB LAYOUT
TOP VIEW

SHD-2014L(Pin2.0 ϕ)



SCHMATIC

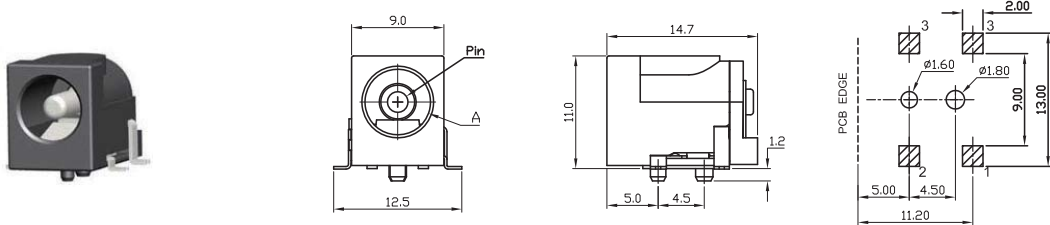


RECOMMENDED PCB LAYOUT
TOP VIEW

SHD-2014MC(Pin1.65 ϕ)/SHD-2014M(Pin2.0 ϕ) / SHD-2014MA(Pin2.5 ϕ)

Part No.	Dim. A
SHD-2014M	$\phi 6.4$
SHD-2014MA	$\phi 6.4$
SHD-2014MC	$\phi 4.4$

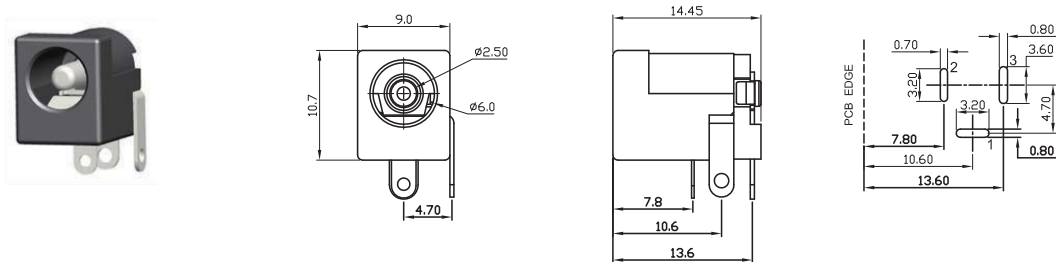
SCHEMATIC



RECOMMENDED PCB LAYOUT
TOP VIEW

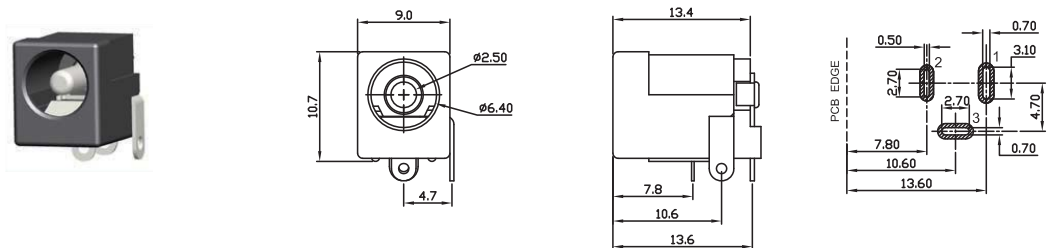
SHD-2016A(Pin2.5 ϕ)

SCHEMATIC



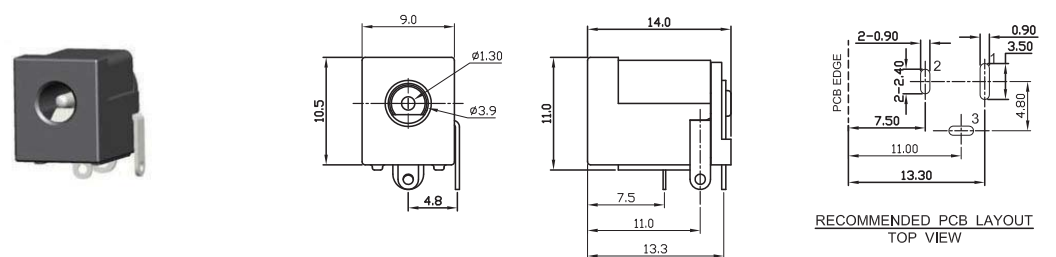
SHD-2024(Pin2.0 ϕ)

SCHEMATIC



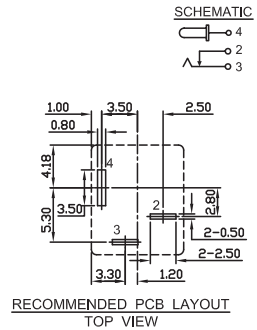
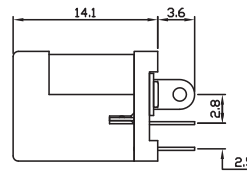
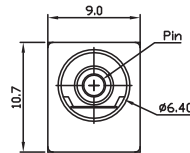
SHD-2014GL(Pin1.3 ϕ)

SCHEMATIC

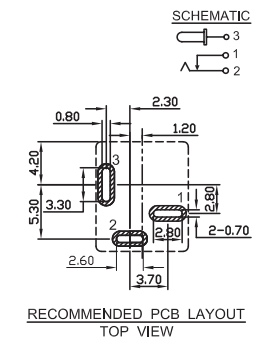
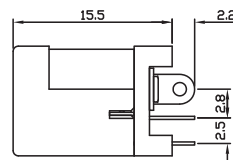
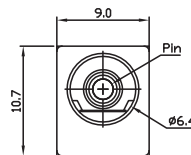


RECOMMENDED PCB LAYOUT
TOP VIEW

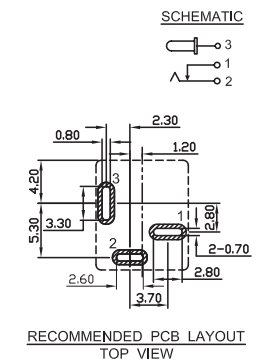
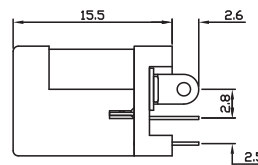
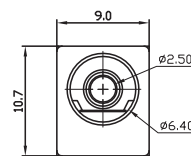
SHD-2012(Pin2.0 ϕ)/SHD-2012A(Pin2.5 ϕ)



SHD-2212(Pin2.0 ϕ)/SHD-2212A(Pin2.5 ϕ)

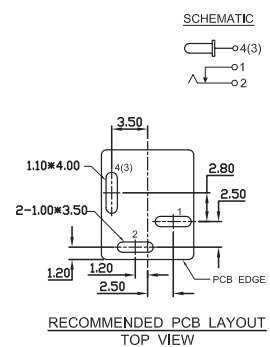
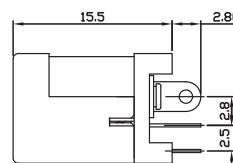
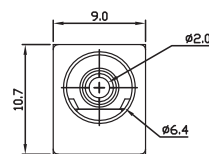


SHD-2213A(Pin2.5 ϕ)

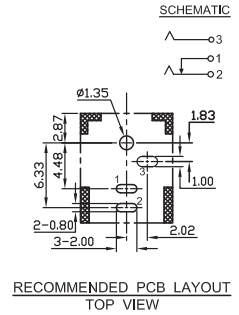
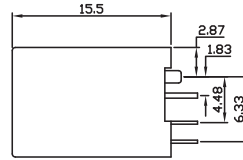
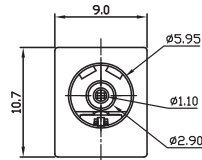


SHDT-2215S

New

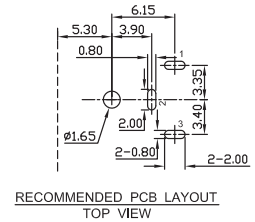
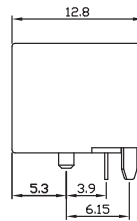
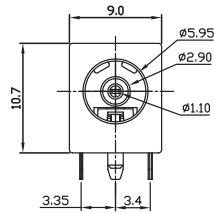


SHDT-6012B



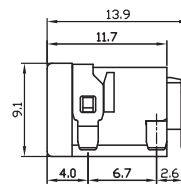
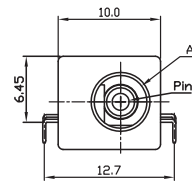
SHDT-6012HB

New

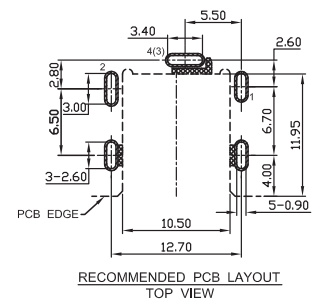


SHDB-3014SEN/SHDB-3016SEN

New



Type	3014	3016
Pin(2)	1.65	1.3
A(2)	5.15	3.9



SHDE-5094SHF

New

