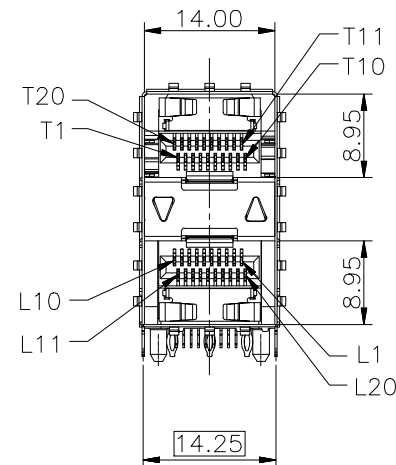
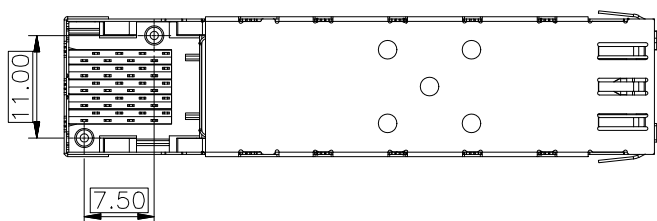
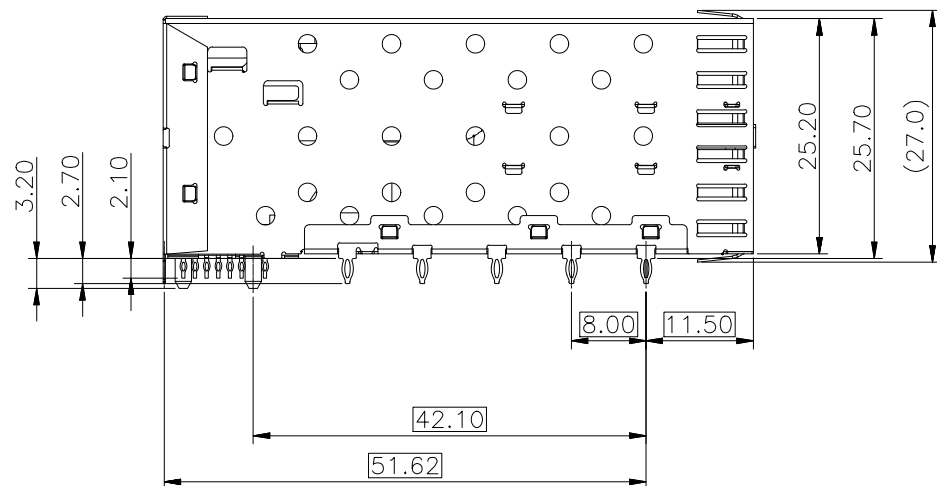
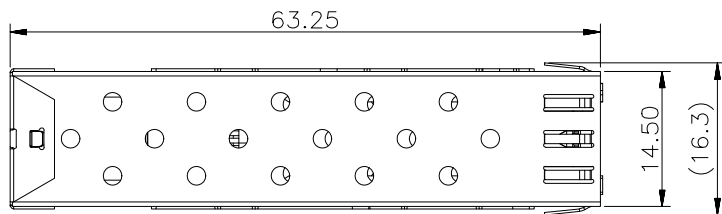


REV.	ECN. NO.	NAME	DATE



NOTES:

MATERIAL:  
 CAGE: NICKEL SILVER, THICKNESS 0.25mm  
 CONNECTOR:  
 PLASTIC HOUSING: HIGH TEMPERATURE LCP, UL94 V-0.  
 SPRING: STAINLESS STEEL, THICKNESS 0.20mm  
 CONTACTS: PHOSPHOR BRONZE, THICKNESS 0.20mm  
 PLATING: 15 $\mu$ " MIN. GOLD ON MATING AREA,  
 150 $\mu$ " MIN. MATE TIN ON SOLDER TAILS.

PACKAGING: TRAY PACKAGING.

TEMPERATURE RANGE: -40°C TO +85°C

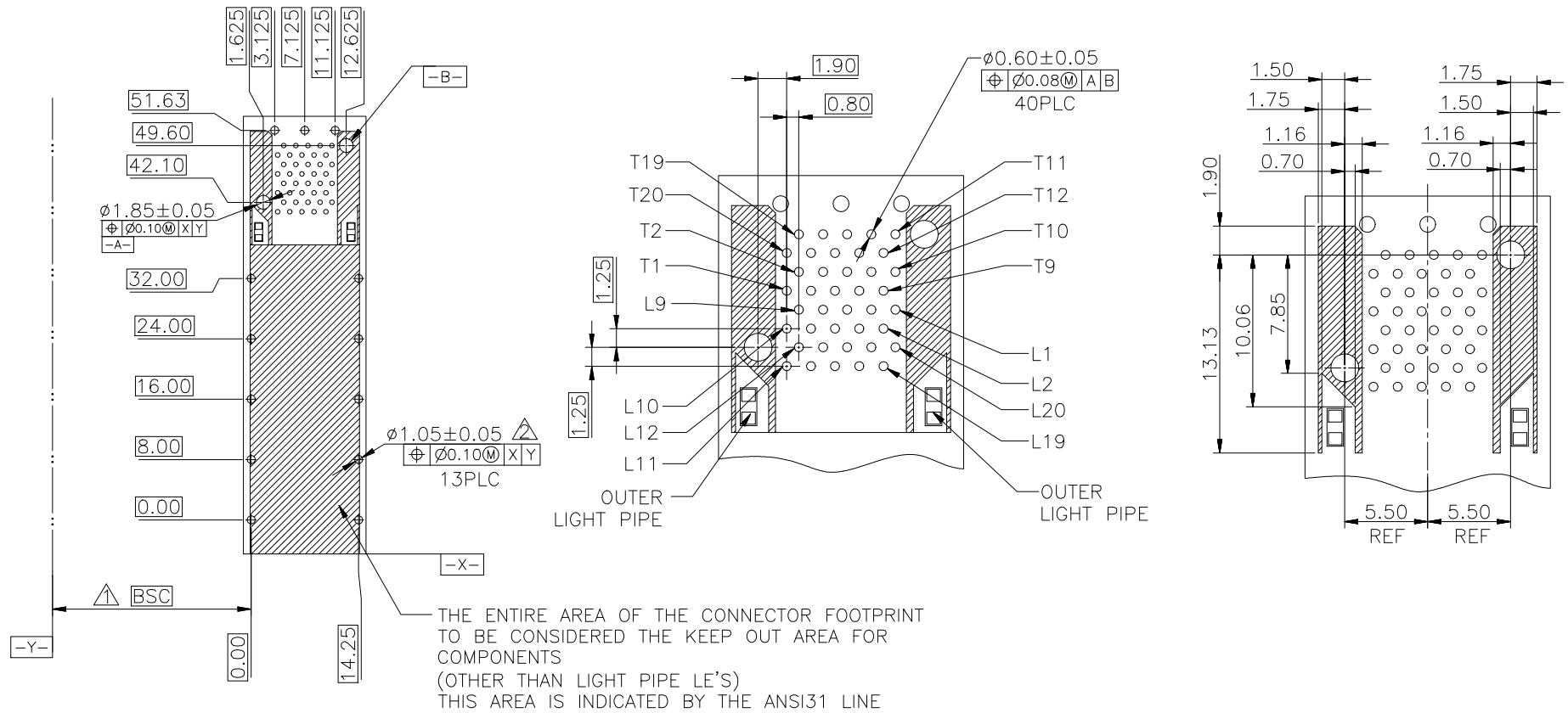
RoHS Compliant

TOLERANCE UNSPECIFIED		<b>VITALCONN</b> a vital connector company		FOR YOUR VITAL CONNECTION	
.0	± 0.38	TITLE: SFP2*1 CAGE+CONN			
.00	± 0.25				
.000	± 0.10				
ANGLE	± 3.00°				
MANUFACTURING COPY					
DRAWN BY:	BECKER	PART NO:	SC213	REV: A	
CHECKED BY:	VTA	SIZE: A4	UNIT:mm	SHEET:10F3	FCN: A4
APPROVED BY:	QPF	PROJECTION		<a href="http://www.vitalconn.com">http://www.vitalconn.com</a>	

REV.	ECN. NO.	NAME	DATE


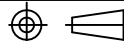
NOTES:

1. DATUM AND BASIC DIMENSIONS ESTABLISHED BY CUSTOMER.
2. 1.05 mm DIAMETER HOLES ARE CHASSIS GROUND .

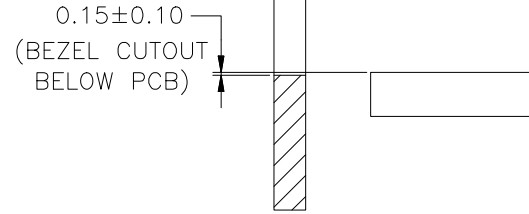
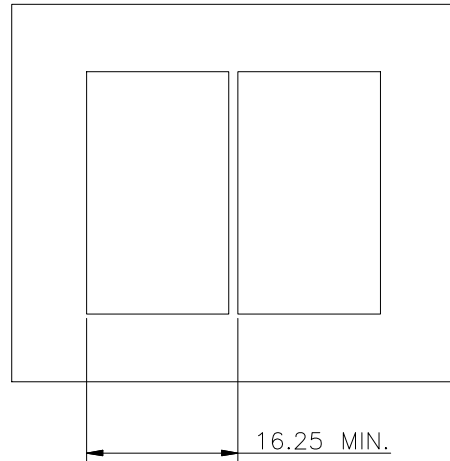
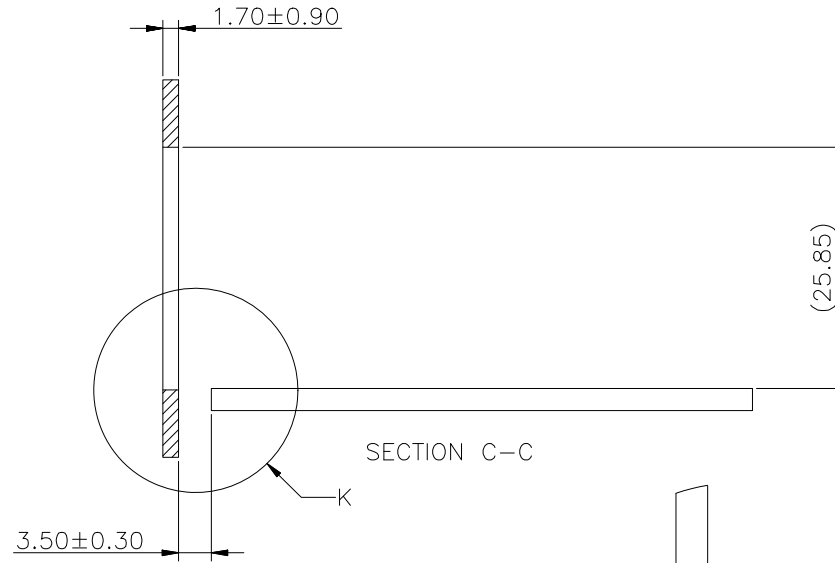
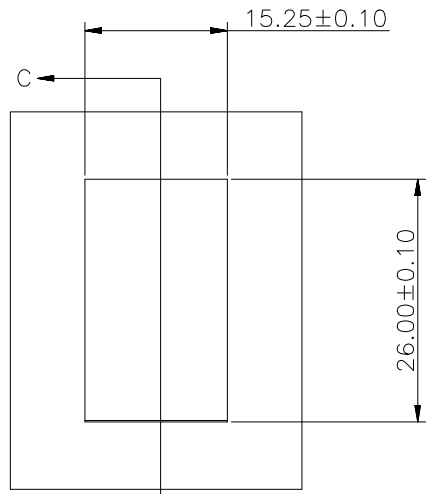


RECOMMENDED PCB CONFIGURATION

RoHS Compliant

TOLERANCE UNSPECIFIED		 a vital connector company		FOR YOUR VITAL CONNECTION	
.0	± 0.38			TITLE: SFP2*1 CAGE+CONN	
.00	± 0.25	DRAWN BY: BECKER	PART NO: SC213	REV: A	
.000	± 0.10	CHECKED BY: VTA	SIZE: A4	UNIT:mm	SHEET:20F3 FCN: A4
ANGLE	± 3.00°	APPROVED BY: QPF	PROJECTION	 <a href="http://www.vitalconn.com">http://www.vitalconn.com</a>	
MANUFACTURING COPY					


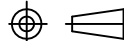
REV.	ECN. NO.	NAME	DATE



RECOMMENDED BEZEL DESIGN

DETAIL K  
2:1

RoHS Compliant

TOLERANCE UNSPECIFIED		 a vital connector company		FOR YOUR VITAL CONNECTION	
.0	± 0.38			TITLE: SFP2*1 CAGE+CONN	
.00	± 0.25	DRAWN BY:	BECKER	PART NO:	SC213
.000	± 0.10	CHECKED BY:	VTA	SIZE: A4	UNIT:mm
ANGLE	± 3.00°	APPROVED BY:	QPF	PROJECTION	
MANUFACTURING COPY				SHEET:30F3	REV: A
				FCN: A4	<a href="http://www.vitalconn.com">http://www.vitalconn.com</a>