

## 10/100 PC CARD MAGNETIC MODULE

### MODEL NO.: TH12010S1

#### FEATURE:

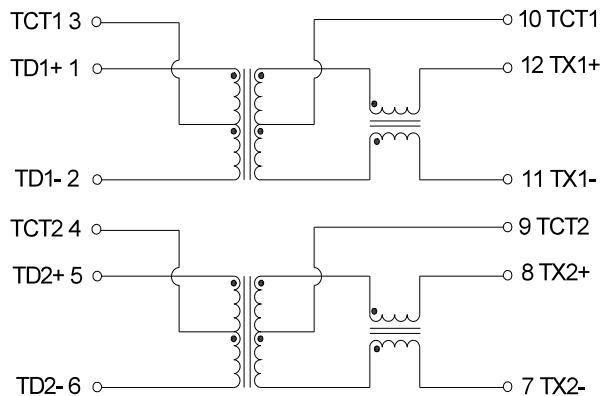
RoHS Compliant  
 RoHS peak solder rating 260°C / 3~5Sec  
 Designed to meet IR requirement  
 Meets IEEE802.3 Baseline Wander Compensation specification

#### SPECIFICATIONS:@ 25°C

Operating Temperature : -10°C to +85°C  
 OCL : 350uH Min.  
 DCR (1-2 & 5-6 pin) : 1.0 Ω Max  
 DCR (7-8 & 11-12 pin) : 1.5 Ω Max.  
 Cw/w : 25 pF Max.  
 HIPOT : 1500 Vrms

Turns Ratio ( ±5% )	Insertion Loss MHz ( dB MIN )	Return Loss MHz ( dB MIN )		Common Mode Rejection Ratio MHz ( dB MIN . )		Cross Talk MHz ( dB MIN )	
TX/RX	0.1~125	1~40	40~100	2	30-200	1	10~100
1CT:1CT	-1.1	-16	$-10+20*\log_{10}(f/80\text{MHz})$	-42	$-15+20*\log_{10}(f/200\text{MHz})$	-50	$-50+22*\log_{10}(f/10\text{MHz})$

#### SCHEMATIC:



#### DIMENSION: mm ,TOLERANCE: (±0.25)

